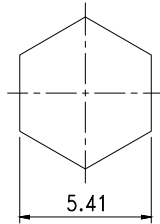
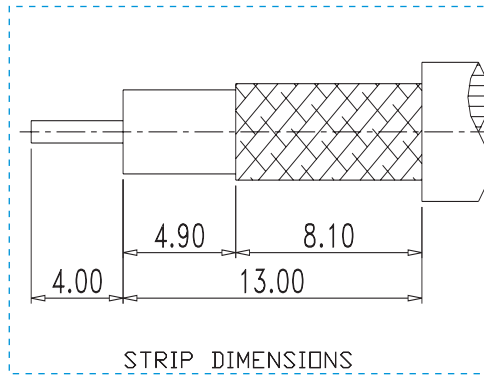


REVISION

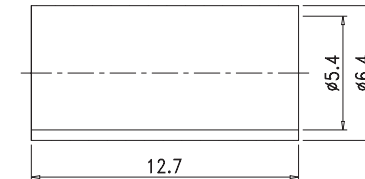
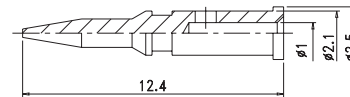
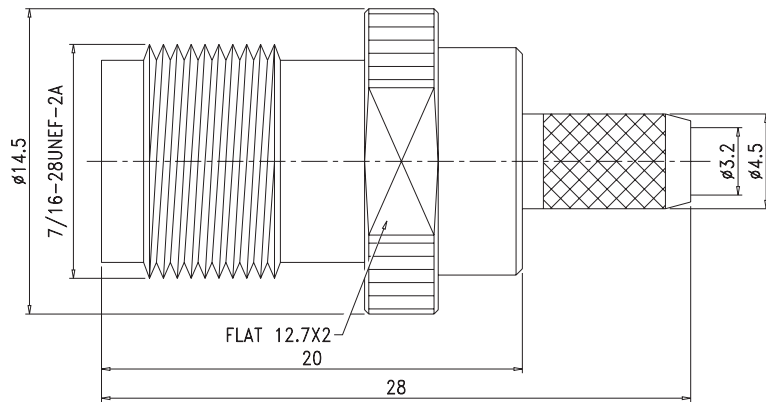
REV	DATE	DESCRIPTION
△	9/03/20	INITIAL



RECOMMENDED  
USE CRIMP TOOL DIE 0.213"



STRIP DIMENSIONS



5.	Ferrule	Brass	1	Nickel
4.	Barrel	Brass	1	Nickel
3.	Insulation	Teflon	1	None
2.	Pin	Brass	1	Gold
1.	Body	Brass	1	Nickel
NO.	DESCRIPTION	MATERIAL	Q'TY	FINISH

UNITS	SCALE	SIZE	TOLERANCE	DRAWN BY:	CHECKED BY:	CAD FILE
[in] mm	NTS	A	.X +/- 0.2 .XX +/- 0.1 .XXX +/- 0.05 ANGLE +/- 0.5			15-15F-RP-TGN
SHEET 1 OF 1					PROPRIETARY AND CONFIDENTIAL THE INFORMATION IN THIS DRAWING IS THE SOLE PROPERTY OF TCC INDUSTRIES INC. ANY REPRODUCTION IN PART OR AS A WHOLE WITHOUT THE WRITTEN PERMISSION OF TCC INDUSTRIES INC IS PROHIBITED.	

DESCRIPTION
TNC, Jack/Female, Straight,Crimp, Reverse Polarity, for TCC Cable Group F

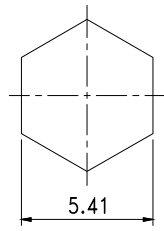


**TCC INDUSTRIES INC.**

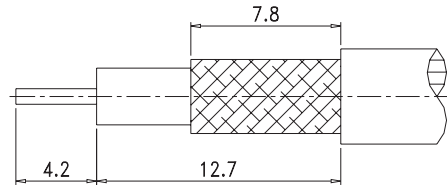
7050 Village Drive unit E, Buena Park, CA 90621-2282  
Tel. 714.523.8885 - FAX. 714.562.0888  
E-Mail: info@tccinc.com Website: www.tccinc.com

REVISION

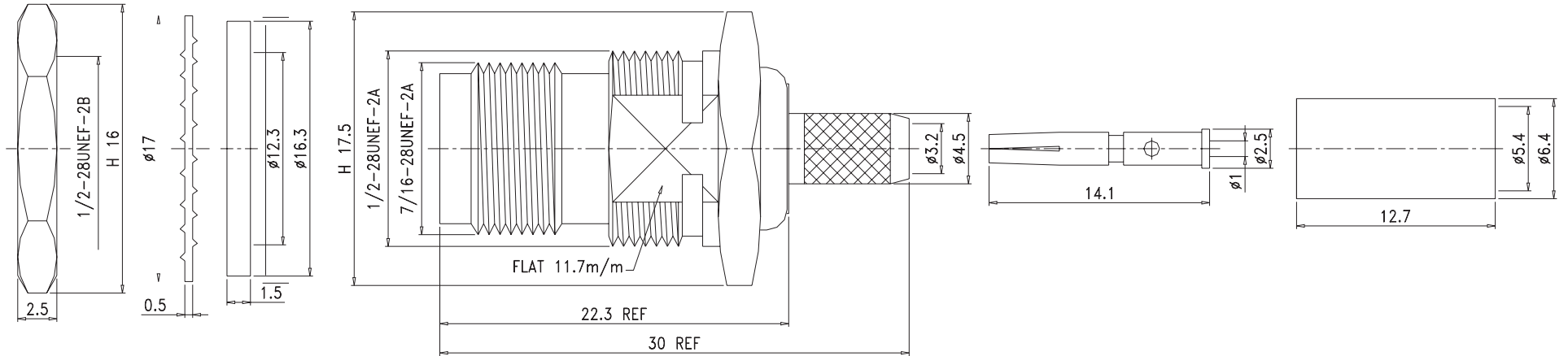
REV	DATE	DESCRIPTION
△	9/03/20	INITIAL



RECOMMENDED  
USE CRIMP TOOL DIE 0.213"



RECOMMENDED  
CABLE STRIPPING DIM'S



8.	Ferrule	Brass	1	Nickel
7.	Nut	Brass	1	Nickel
6.	Washer	Brass	1	Nickel
5.	Gasket	Rubber	1	Red
4.	Barrel	Brass	1	Nickel
3.	Insulation	Delrin	1	None
2.	Pin	Brass	1	Gold
1.	Body	Brass	1	Nickel
NO.	DESCRIPTION	MATERIAL	Q'TY	FINISH

UNITS	SCALE	SIZE	TOLERANCE	DRAWN BY:	CHECKED BY:	CAD FILE
[in] mm	NTS	A	.X +/- 0.2 .XX +/- 0.1 .XXX +/- 0.05 ANGLE +/- 0.5			15-11F-DGN
SHEET 1 OF 1				PROPRIETARY AND CONFIDENTIAL THE INFORMATION IN THIS DRAWING IS THE SOLE PROPERTY OF TCC INDUSTRIES INC. ANY REPRODUCTION IN PARTS OR AS A WHOLE WITHOUT THE WRITTEN PERMISSION OF TCC INDUSTRIES INC IS PROHIBITED.		

DESCRIPTION
TNC, Jack/Female, Straight, Crimp, Bulkhead Rear Mount, for TCC Cable Group F

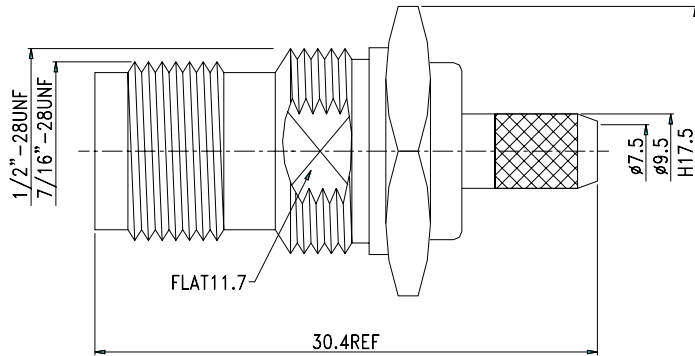


**TCC INDUSTRIES INC.**

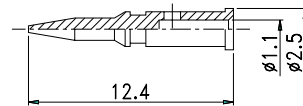
7050 Village Drive unit E, Buena Park, CA 90621-2282  
Tel. 714.523.8885 - FAX. 714.562.0888  
E-Mail: info@tccinc.com Website: www.tccinc.com

REVISION

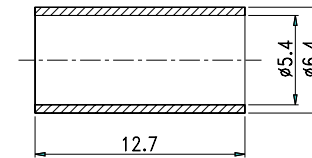
REV	DATE	DESCRIPTION
△	9/03/20	INITIAL



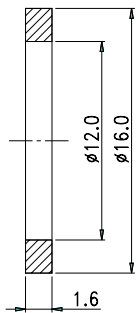
3.PIN



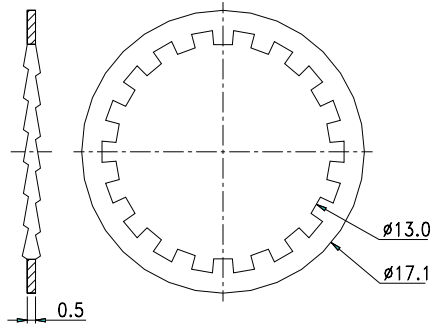
5.FERRULE



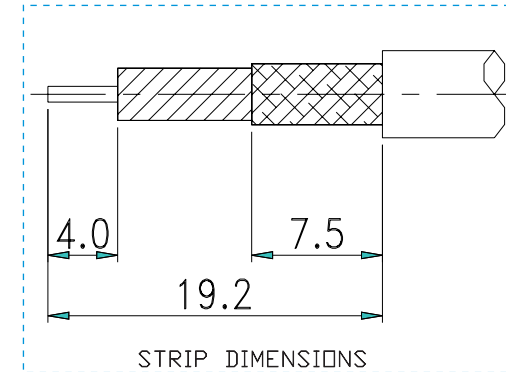
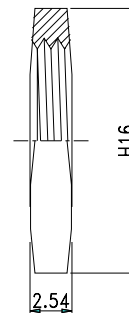
6.GASKET



7.WASHER



8.NUT



8.	NUT	BRASS	1	NICKEL
7.	WASHER	BRASS	1	NICKEL
6.	O-RING	RUBBER	1	RED
5.	FERRULE	BRASS	1	NICKEL
4.	INSULATION	TEFLON	1	NONE
3.	PIN	BRASS	1	GOLD
2.	BARREL	BRASS	1	NICKEL
1.	BODY	BRASS	1	NICKEL
NO.	DESCRIPTION	MATERIAL	Q'TY	FINISH

UNITS	SCALE	SIZE	TOLERANCE	DRAWN BY:	CHECKED BY:	CAD FILE
[in] mm	NTS	A	.X +/- 0.2 .XX +/- 0.1 .XXX +/- 0.05 ANGLE +/- 0.5			15-11F-RP-TGN
SHEET 1 OF 1			PROPRIETARY AND CONFIDENTIAL THE INFORMATION IN THIS DRAWING IS THE SOLE PROPERTY OF TCC INDUSTRIES INC. ANY REPRODUCTION IN PARTS OR AS A WHOLE WITHOUT THE WRITTEN PERMISSION OF TCC INDUSTRIES INC IS PROHIBITED.			

DESCRIPTION
TNC, Jack/Female, Straight,Crimp, Bulkhead Rear Mount, Reverse Polarity, for TCC Cable



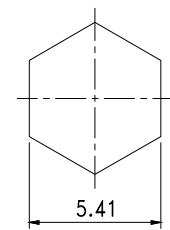
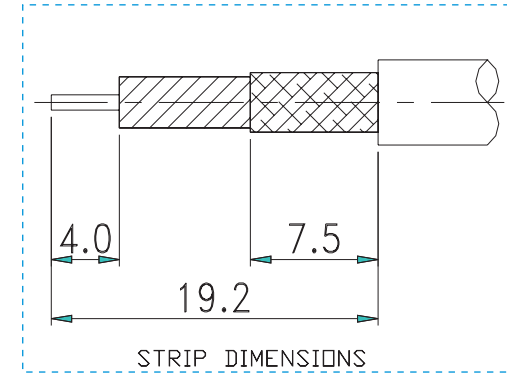
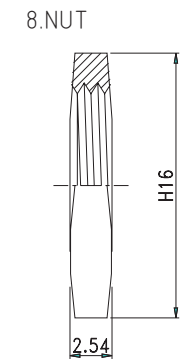
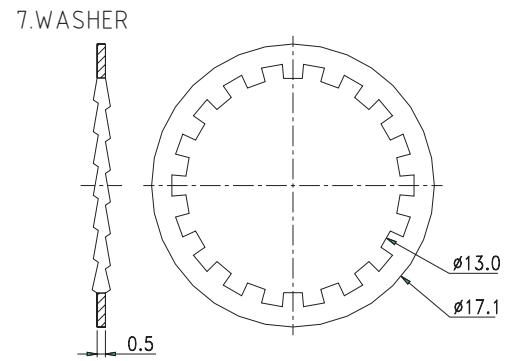
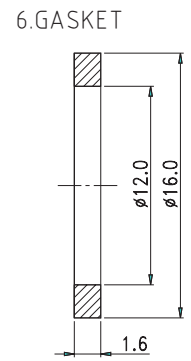
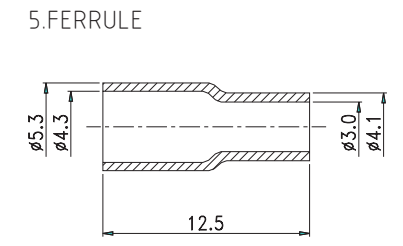
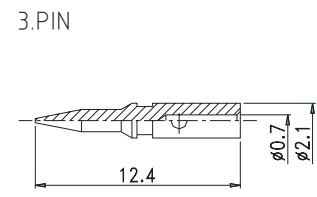
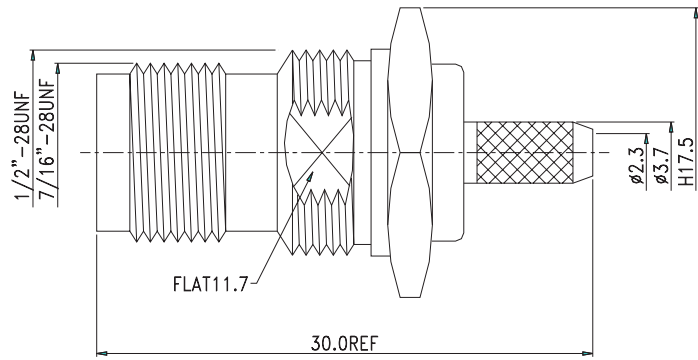
**TCC INDUSTRIES INC.**

7050 Village Drive unit E, Buena Park, CA 90621-2282  
 Tel. 714.523.8885 - FAX. 714.562.0888  
 E-Mail: info@tccinc.com Website: www.tccinc.com



REVISION

REV	DATE	DESCRIPTION
△	9/03/20	INITIAL



RECOMMENDED  
USE CRIMP TOOL DIE 0.213"

8.	NUT	BRASS	1	NICKEL
7.	WASHER	BRASS	1	NICKEL
6.	O-RING	RUBBER	1	RED
5.	FERRULE	BRASS	1	NICKEL
4.	INSULATION	TEFLON	1	NONE
3.	PIN	BRASS	1	GOLD
2.	BARREL	BRASS	1	NICKEL
1.	BODY	BRASS	1	NICKEL
NO.	DESCRIPTION	MATERIAL	Q'TY	FINISH

UNITS	SCALE	SIZE	TOLERANCE	DRAWN BY:	CHECKED BY:	CAD FILE
[in] mm	NTS	A	.X +/- 0.2 .XX +/- 0.1 .XXX +/- 0.05 ANGLE +/- 0.5			15-11L-RP-TGN
SHEET 1 OF 1			PROPRIETARY AND CONFIDENTIAL THE INFORMATION IN THIS DRAWING IS THE SOLE PROPERTY OF TCC INDUSTRIES INC. ANY REPRODUCTION IN PARTS OR AS A WHOLE WITHOUT THE WRITTEN PERMISSION OF TCC INDUSTRIES INC IS PROHIBITED.			

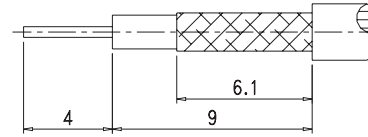
DESCRIPTION
TNC, Jack/Female, Straight,Crimp, Bulkhead Rear Mount, Reverse Polarity, for TCC Cable



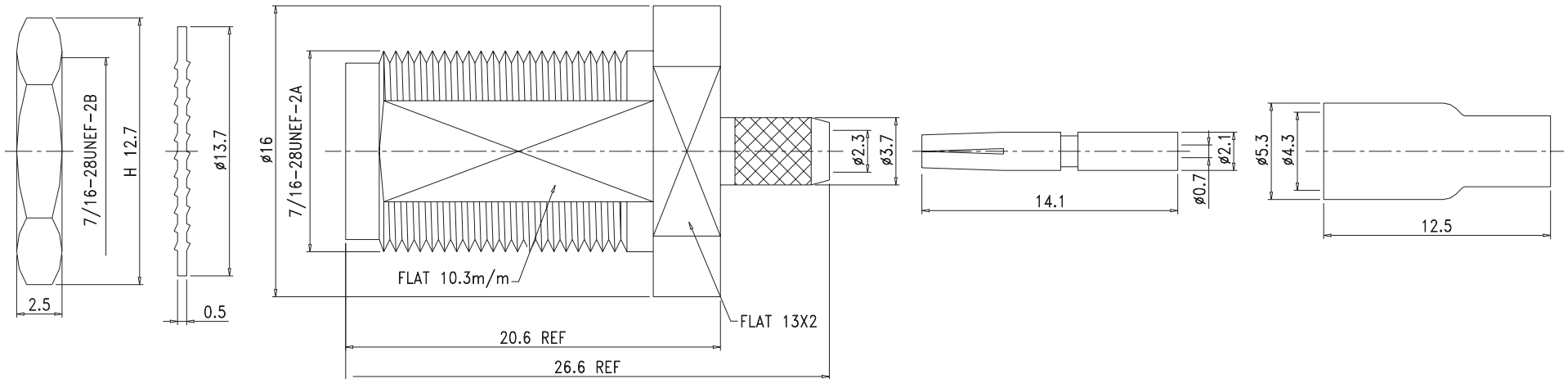
**TCC INDUSTRIES INC.**  
 7050 Village Drive unit E, Buena Park, CA 90621-2282  
 Tel. 714.523.8885 - FAX. 714.562.0888  
 E-Mail: info@tccinc.com Website: www.tccinc.com

REVISION

REV	DATE	DESCRIPTION
△	9/03/20	INITIAL



Recommended Cable Stripping Dimensions



8.	Nut	Brass	1	Nickel
7.	Washer	Brass	1	Nickel
6.	Ferrule	Brass	1	Nickel
5.	Barrel	Brass	1	Nickel
4.	Insulation	Teflon	1	None
3.	Insulation	Teflon	1	None
2.	Pin	Brass	1	Gold
1.	Body	Brass	1	Nickel
NO.	DESCRIPTION	MATERIAL	Q'TY	FINISH

UNITS	SCALE	SIZE	TOLERANCE	DRAWN BY:	CHECKED BY:	CAD FILE
[in] mm	NTS	A	.X +/- 0.2 .XX +/- 0.1 .XXX +/- 0.05 ANGLE +/- 0.5			15-12L-TGN
SHEET 1 OF 1			PROPRIETARY AND CONFIDENTIAL THE INFORMATION IN THIS DRAWING IS THE SOLE PROPERTY OF TCC INDUSTRIES INC. ANY REPRODUCTION IN PART OR AS A WHOLE WITHOUT THE WRITTEN PERMISSION OF TCC INDUSTRIES INC IS PROHIBITED.			

DESCRIPTION
TNC, Jack/Female, Straight,Crimp, Bulkhead, for TCC Cable Group L



**TCC INDUSTRIES INC.**

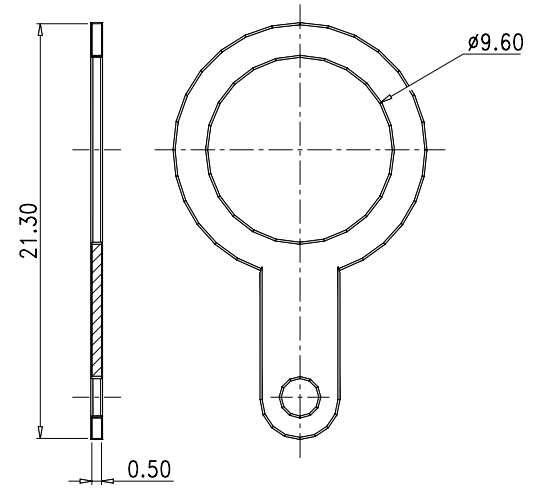
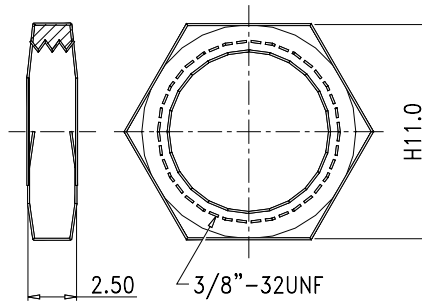
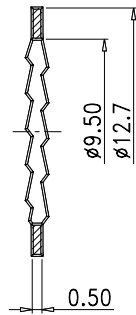
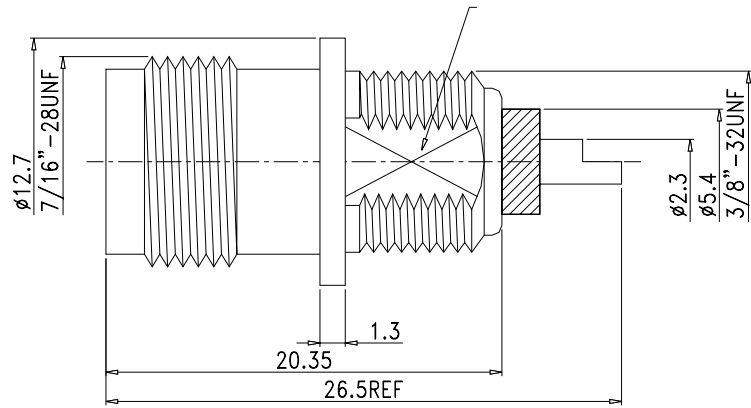
7050 Village Drive unit E, Buena Park, CA 90621-2282

Tel. 714.523.8885 - FAX. 714.562.0888

E-Mail: info@tccinc.com Website: www.tccinc.com

REVISION

REV	DATE	DESCRIPTION
△	9/03/20	INITIAL



6.	NUT	BRASS	1	NICKEL
5.	LUG	BRASS	1	NICKEL
4.	WASHER	BRASS	1	NICKEL
3.	INSULATION	DELRIN	1	NONE
2.	PIN	BRASS	1	GOLD
1.	BODY	BRASS	1	NICKEL
NO.	DESCRIPTION	MATERIAL	Q'TY	FINISH

UNITS	SCALE	SIZE	TOLERANCE	DRAWN BY:	CHECKED BY:	CAD FILE
[in] mm	NTS	A	.X +/- 0.2 .XX +/- 0.1 .XXX +/- 0.05 ANGLE +/- 0.5			15-29-DGN
SHEET 1 OF 1						

PROPRIETARY AND CONFIDENTIAL  
 THE INFORMATION IN THIS DRAWING IS THE SOLE PROPERTY OF TCC INDUSTRIES INC. ANY REPRODUCTION IN PARTS OR AS A WHOLE WITHOUT THE WRITTEN PERMISSION OF TCC INDUSTRIES INC IS PROHIBITED.

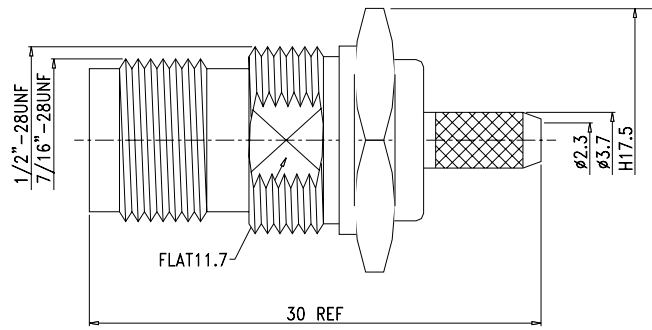
DESCRIPTION
TNC, Jack/Female, Straight, Soldering, Bulkhead Rear Mount,



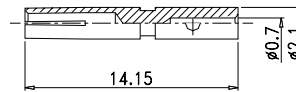
**TCC INDUSTRIES INC.**

7050 Village Drive unit E, Buena Park, CA 90621-2282  
 Tel. 714.523.8885 - FAX. 714.562.0888  
 E-Mail: info@tcinc.com Website: www.tcinc.com

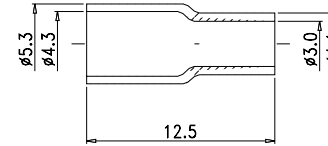
REVISION		
REV	DATE	DESCRIPTION
△	9/03/20	INITIAL



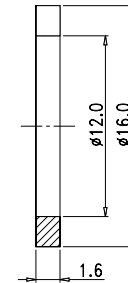
3. PIN



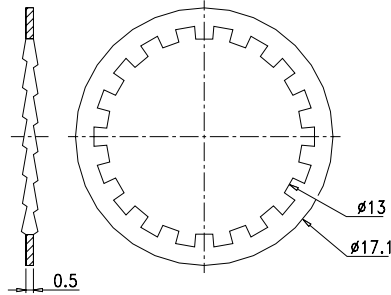
6. FERRULE



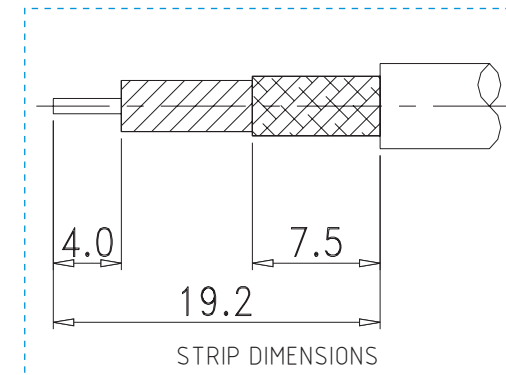
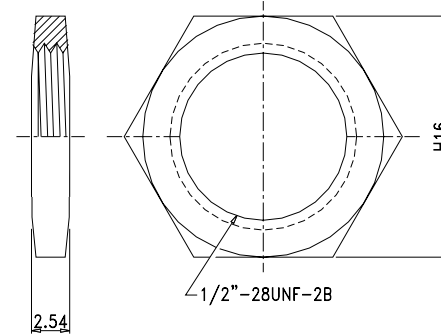
7. O-RING



8. WASHER



9. NUT



9.	NUT	BRASS	1	NICKEL
8.	WASHER	BRASS	1	NICKEL
7.	O-RING	RUBBER	1	RED
6.	FERRULE	BRASS	1	NICKEL
5.	INSULATION2	TEFLON	1	NONE
4.	INSULATION1	TEFLON	1	NONE
3.	PIN	BRASS	1	GOLD
2.	BARREL	BRASS	1	NICKEL
1.	BODY	BRASS	1	NICKEL
NO.	DESCRIPTION	MATERIAL	Q'TY	FINISH

UNITS	SCALE	SIZE	TOLERANCE	DRAWN BY:	CHECKED BY:	CAD FILE
[in] mm	NTS	A	.X +/- 0.2 .XX +/- 0.1 .XXX +/- 0.05 ANGLE +/- 0.5			15-11L-TGN
SHEET 1 OF 1			PROPRIETARY AND CONFIDENTIAL THE INFORMATION IN THIS DRAWING IS THE SOLE PROPERTY OF TCC INDUSTRIES INC. ANY REPRODUCTION IN PART OR AS A WHOLE WITHOUT THE WRITTEN PERMISSION OF TCC INDUSTRIES INC. IS PROHIBITED.			

DESCRIPTION
TNC, Jack/Female, Straight,Crimp, Bulkhead Rear Mount, for TCC Cable Group L



**TCC INDUSTRIES INC.**

7050 Village Drive unit E, Buena Park, CA 90621-2282

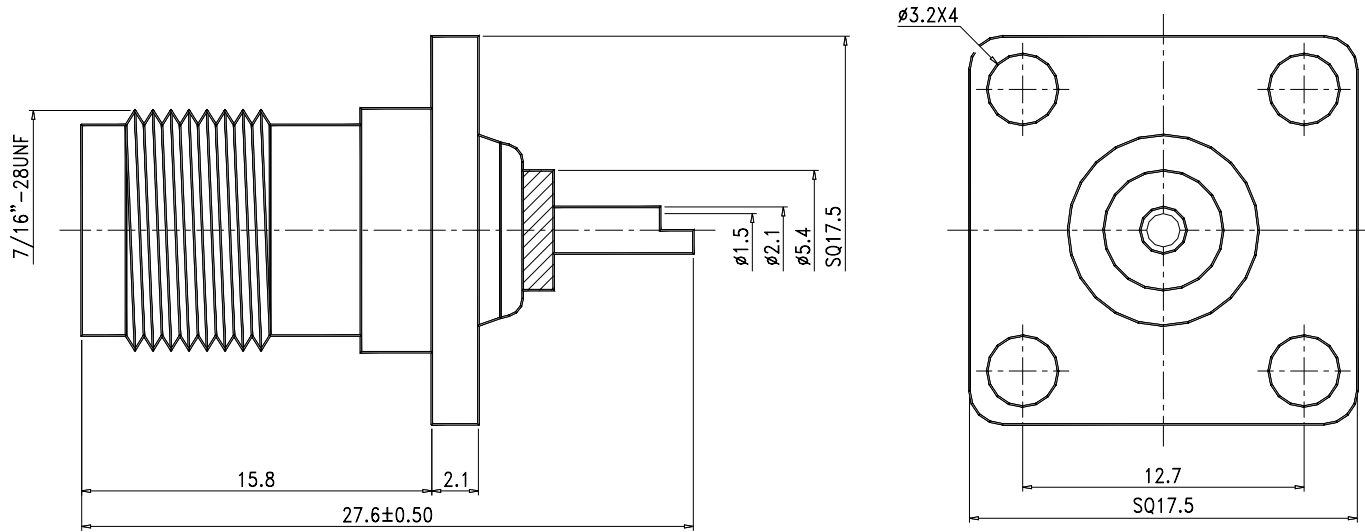
Tel. 714.523.8885 - FAX. 714.562.0888

E-Mail: info@tccinc.com Website: www.tccinc.com



REVISION

REV	DATE	DESCRIPTION
△	9/03/20	INITIAL



3	INSULATION	TEFLON	1	NONE
2	PIN	BRASS	1	GOLD
1	BODY	BRASS	1	NICKEL
NO.	DESCRIPTION	MATERIAL	Q'TY	FINISH

UNITS	SCALE	SIZE	TOLERANCE	DRAWN BY:	CHECKED BY:	CAD FILE
[in] mm	NTS	A	.X +/- 0.2 .XX +/- 0.1 .XXX +/- 0.05 ANGLE +/- 0.5			15-30-TGN
SHEET 1 OF 1			PROPRIETARY AND CONFIDENTIAL THE INFORMATION IN THIS DRAWING IS THE SOLE PROPERTY OF TCC INDUSTRIES INC. ANY REPRODUCTION IN PARTS OR AS A WHOLE WITHOUT THE WRITTEN PERMISSION OF TCC INDUSTRIES INC. IS PROHIBITED.			

DESCRIPTION
TNC, Jack/Female, Straight, Soldering, 4 Hole Flange

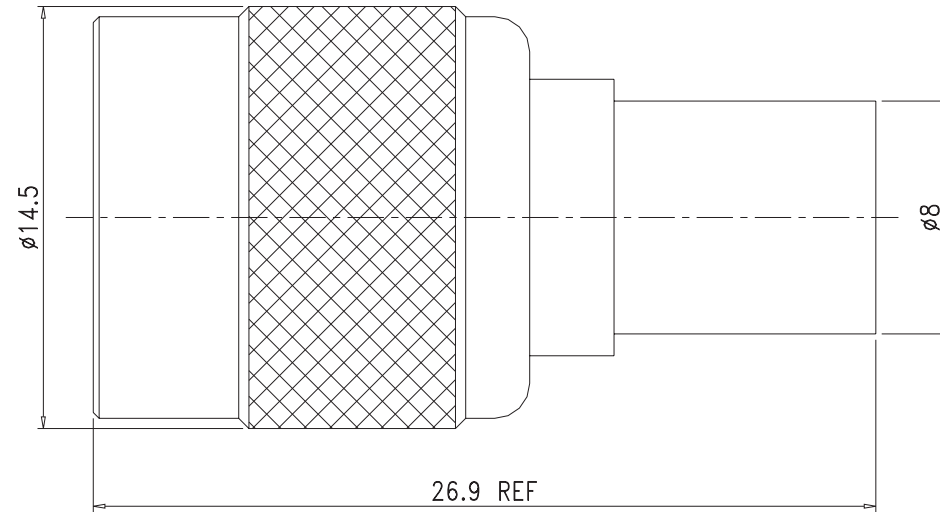


**TCC INDUSTRIES INC.**

7050 Village Drive unit E, Buena Park, CA 90621-2282  
 Tel. 714.523.8885 - FAX. 714.562.0888  
 E-Mail: info@tcinc.com Website: www.tcinc.com



REVISION		
REV	DATE	DESCRIPTION
△	9/03/20	INITIAL



Impedance: 50 ohms  
 Wattage: 0.25W  
 VSWR: 1.5max @ 1.2Ghz

7.	Shell	Brass	1	Nickel
6.	Gasket	Rubber	1	Red
5.	Retaining	SK-51	Ring	Nickel
4.	Sleeve	Brass	1	Nickel
3.	Insulation	Delrin	1	None
2.	Pin	Brass	1	Gold
1.	Body	Brass	1	Nickel
NO.	DESCRIPTION	MATERIAL	Q'TY	FINISH

UNITS	SCALE	SIZE	TOLERANCE	DRAWN BY:	CHECKED BY:	CAD FILE
[in] mm	NTS	A	.X +/- 0.2 .XX +/- 0.1 .XXX +/- 0.05 ANGLE +/- 0.5			15-52-50-DGN
SHEET 1 OF 1			PROPRIETARY AND CONFIDENTIAL THE INFORMATION IN THIS DRAWING IS THE SOLE PROPERTY OF TCC INDUSTRIES INC. ANY REPRODUCTION IN PARTS OR AS A WHOLE WITHOUT THE WRITTEN PERMISSION OF TCC INDUSTRIES INC. IS PROHIBITED.			

DESCRIPTION
TNC, Plug/Male, Straight,, Terminator,



**TCC INDUSTRIES INC.**

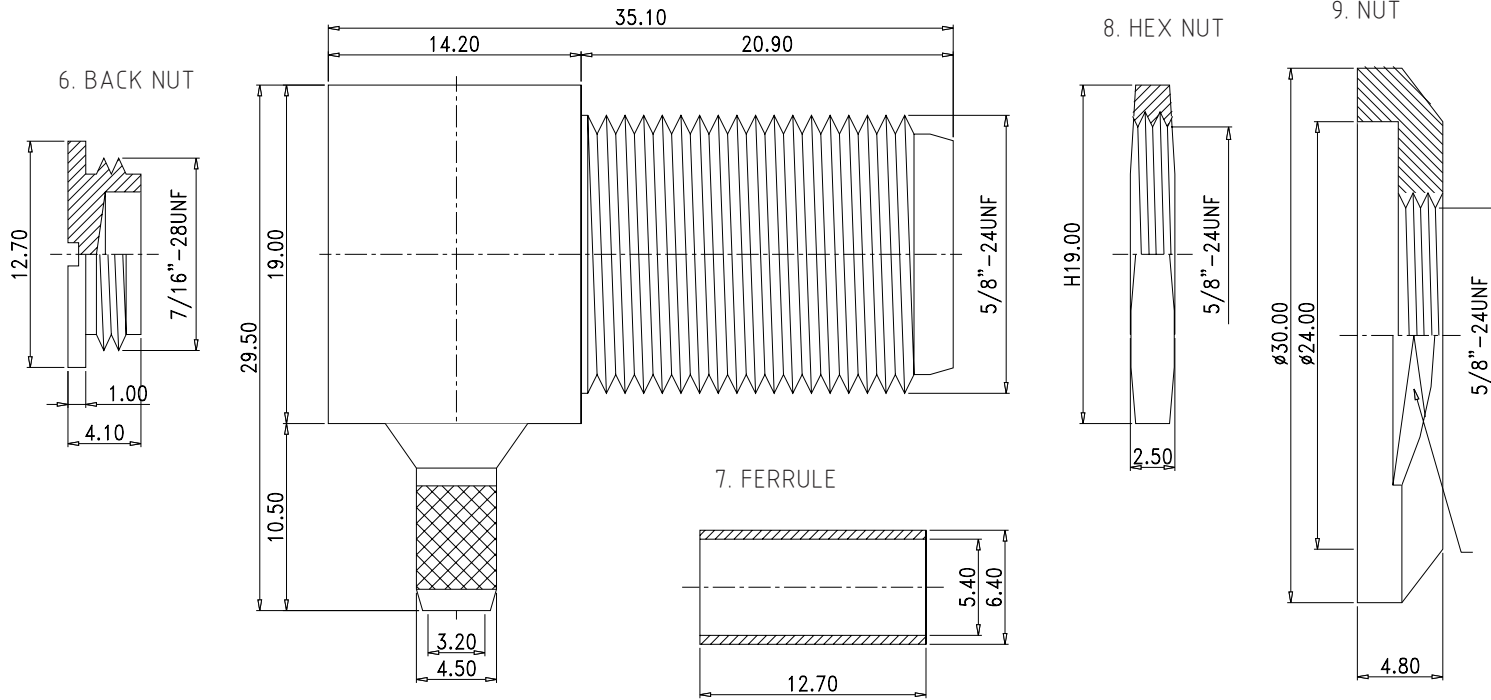
7050 Village Drive unit E, Buena Park, CA 90621-2282

Tel. 714.523.8885 - FAX. 714.562.0888

E-Mail: info@tcinc.com Website: www.tcinc.com

REVISION

REV	DATE	DESCRIPTION
△	9/03/20	INITIAL



9.	NUT	BRASS	1	NICKEL
8.	HEX NUT	BRASS	1	NICKEL
7.	FERRULE	BRASS	1	NICKEL
6.	BACK NUT	BRASS	1	NICKEL
5.	INSULATION 2	DELRIN	1	NONE
4.	INSULATION 1	DELRIN	1	NONE
3.	PIN	BRASS	1	GOLD
2.	BARREL	BRASS	1	NICKEL
1.	BODY	BRASS	1	NICKEL
NO.	DESCRIPTION	MATERIAL	Q'TY	FINISH

UNITS	SCALE	SIZE	TOLERANCE	DRAWN BY:	CHECKED BY:	CAD FILE
[in] mm	NTS	A	.X +/- 0.2 .XX +/- 0.1 .XXX +/- 0.05 ANGLE +/- 0.5			17-05F-DGN
SHEET 1 OF 1				PROPRIETARY AND CONFIDENTIAL THE INFORMATION IN THIS DRAWING IS THE SOLE PROPERTY OF TCC INDUSTRIES INC. ANY REPRODUCTION IN PARTS OR AS A WHOLE WITHOUT THE WRITTEN PERMISSION OF TCC INDUSTRIES INC. IS PROHIBITED.		

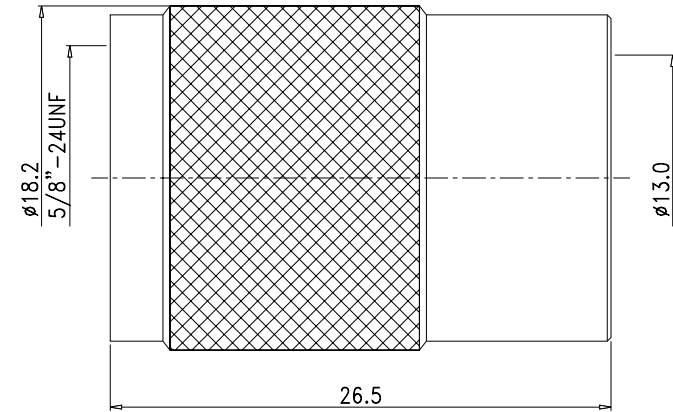
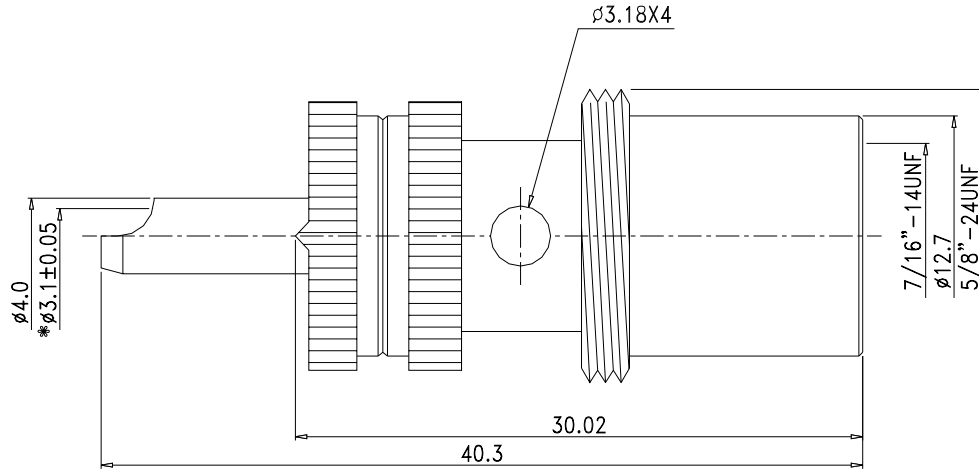
DESCRIPTION
UHF, Jack/Female, Right Angle, Twist-on, for TCC Cable Group F



**TCC INDUSTRIES INC.**  
 7050 Village Drive unit E, Buena Park, CA 90621-2282  
 Tel. 714.523.8885 - FAX. 714.562.0888  
 E-Mail: info@tccinc.com Website: www.tccinc.com

REVISION

REV	DATE	DESCRIPTION
△	9/03/20	INITIAL



4.	SHELL	BRASS	1	NICKEL
3.	INSULATION	TEFLON	1	NONE
2.	PIN	BRASS	1	SILVER
1.	BODY	BRASS	1	SILVER
NO.	DESCRIPTION	MATERIAL	Q'TY	FINISH

UNITS	SCALE	SIZE	TOLERANCE	DRAWN BY:	CHECKED BY:	CAD FILE
[in] mm	NTS	A	.X +/- 0.2 .XX +/- 0.1 .XXX +/- 0.05 ANGLE +/- 0.5			17-06B-1-TSSN
SHEET 1 OF 1						

PROPRIETARY AND CONFIDENTIAL  
 THE INFORMATION IN THIS DRAWING IS THE SOLE PROPERTY OF TCC INDUSTRIES INC. ANY REPRODUCTION IN PARTS OR AS A WHOLE WITHOUT THE WRITTEN PERMISSION OF TCC INDUSTRIES INC. IS PROHIBITED.

DESCRIPTION  
 UHF, Plug/Male, Straight, Soldering, for TCC Cable Group B

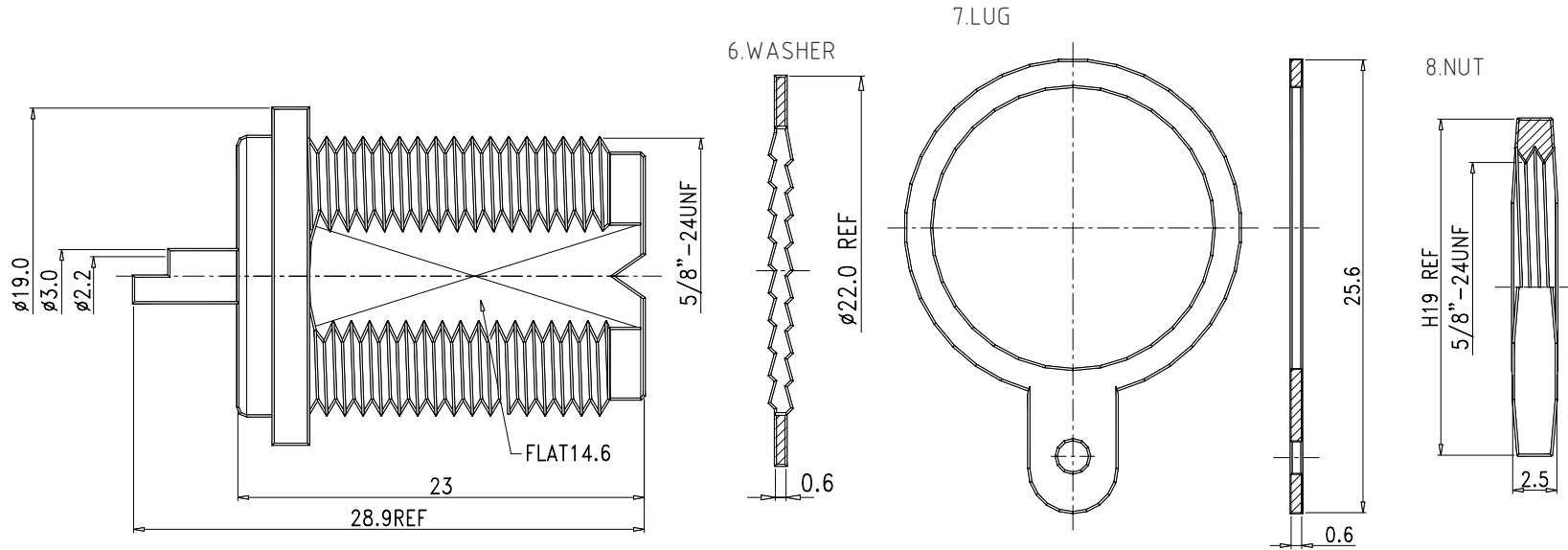


**TCC INDUSTRIES INC.**

7050 Village Drive unit E, Buena Park, CA 90621-2282  
 Tel. 714.523.8885 - FAX. 714.562.0888  
 E-Mail: info@tccinc.com Website: www.tccinc.com

REVISION

REV	DATE	DESCRIPTION
△	9/03/20	INITIAL



8	.NUT	BRASS	1	NICKEL
7.	LUG	BRASS	1	NICKEL
6.	WASHER	BRASS	1	NICKEL
5.	SLEEVE	BRASS	1	NICKEL
4.	INSULATION2	DELRIN	1	NONE
3.	INSULATION1	DELRIN	1	NONE
2.	PIN	BRASS	1	SILVER
1.	BODY	BRASS	1	NICKEL
NO.	DESCRIPTION	MATERIAL	Q'TY	FINISH

UNITS	SCALE	SIZE	TOLERANCE	DRAWN BY:	CHECKED BY:	CAD FILE
[in] mm	NTS	A	.X +/- 0.2 .XX +/- 0.1 .XXX +/- 0.05 ANGLE +/- 0.5			17-07-1-DSN
SHEET 1 OF 1				PROPRIETARY AND CONFIDENTIAL THE INFORMATION IN THIS DRAWING IS THE SOLE PROPERTY OF TCC INDUSTRIES INC. ANY REPRODUCTION IN PARTS OR AS A WHOLE WITHOUT THE WRITTEN PERMISSION OF TCC INDUSTRIES INC IS PROHIBITED.		

DESCRIPTION
UHF, Jack/Female, Straight, Soldering, Bulkhead

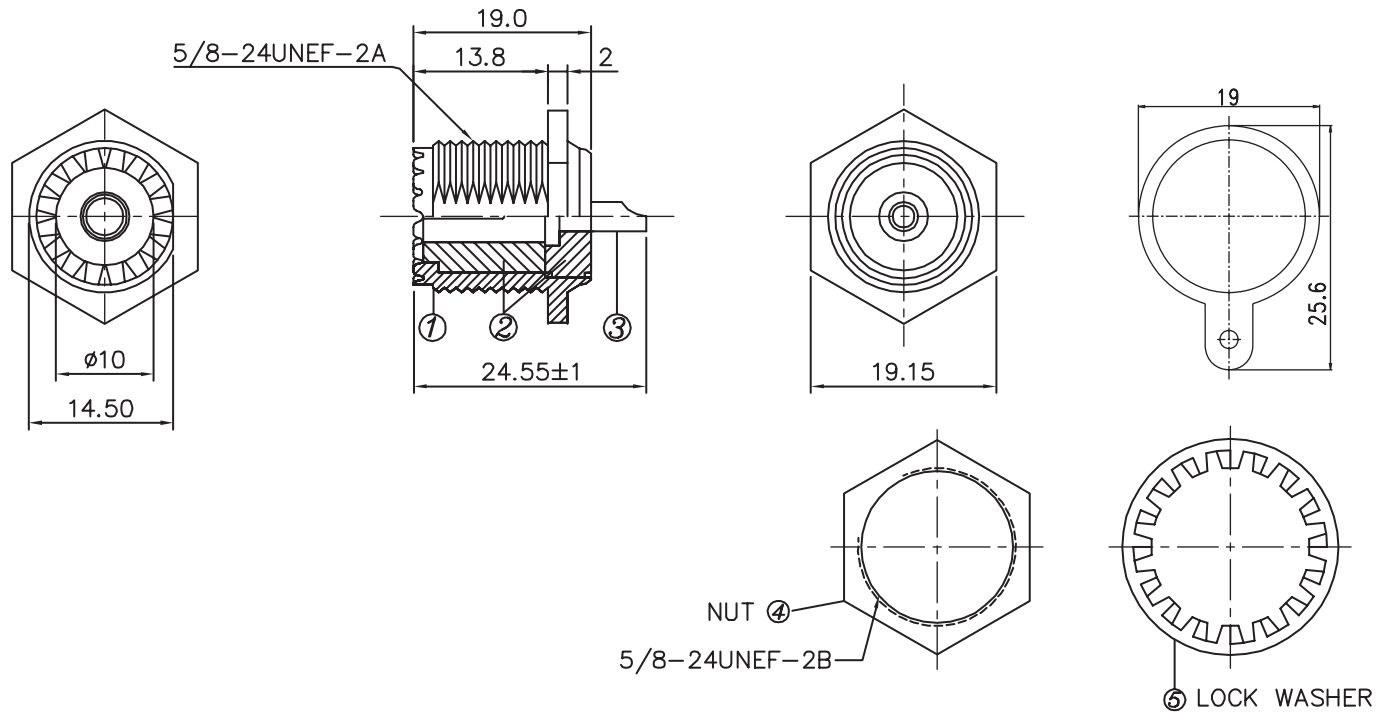


**TCC INDUSTRIES INC.**

7050 Village Drive unit E, Buena Park, CA 90621-2282  
 Tel. 714.523.8885 - FAX. 714.562.0888  
 E-Mail: info@tcinc.com Website: www.tcinc.com

REVISION

REV	DATE	DESCRIPTION
△	9/03/20	INITIAL



6	LUG	BRASS	1	NICKEL/TIN
5	WASHER	IRON	1	NICKEL/TIN
4	NUT	IRON	1	NICKEL
3	CENTERCONTACT	BRASS	1	SILVER
2	INSULATION	PBT(94V-0)	1	NONE
1	BODY	ZINC	1	NICKEL
NO.	DESCRIPTION	MATERIAL	Q'TY	FINISH

UNITS	SCALE	SIZE	TOLERANCE	DRAWN BY:	CHECKED BY:	CAD FILE
[in] mm	NTS	A	.X +/- 0.2 .XX +/- 0.1 .XXX +/- 0.05 ANGLE +/- 0.5			17-07-31-PSNZ
SHEET 1 OF 1				PROPRIETARY AND CONFIDENTIAL THE INFORMATION IN THIS DRAWING IS THE SOLE PROPERTY OF TCC INDUSTRIES INC. ANY REPRODUCTION IN PARTS OR AS A WHOLE WITHOUT THE WRITTEN PERMISSION OF TCC INDUSTRIES INC. IS PROHIBITED.		

DESCRIPTION
UHF, Jack/Female, Straight, Soldering, Bulkhead

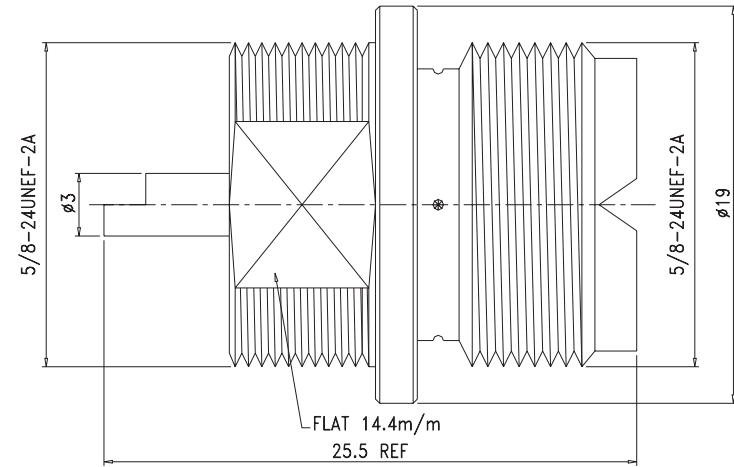
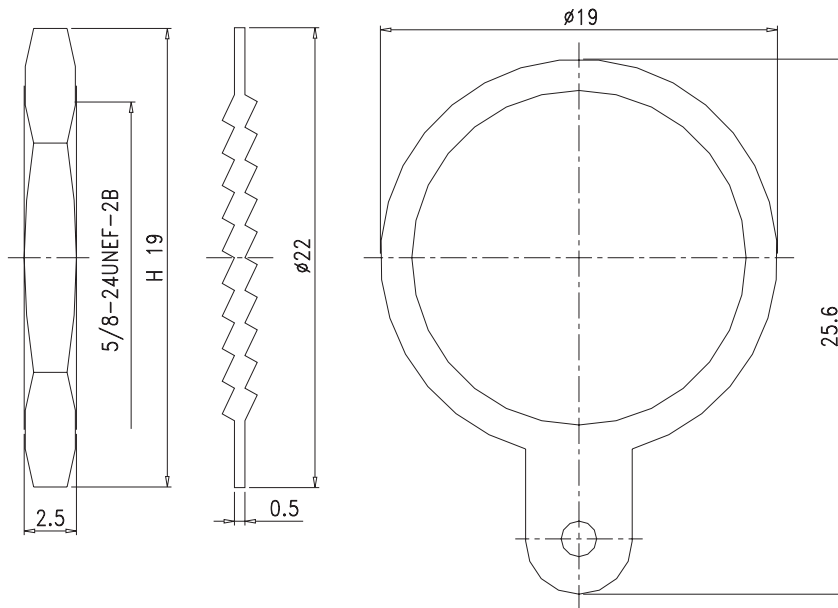


**TCC INDUSTRIES INC.**

7050 Village Drive unit E, Buena Park, CA 90621-2282  
 Tel. 714.523.8885 - FAX. 714.562.0888  
 E-Mail: info@tccinc.com Website: www.tccinc.com

REVISION

REV	DATE	DESCRIPTION
△	9/03/20	INITIAL



7.	Nut	Brass	1	Nickel
6.	Washer	Brass	1	Nickel
5.	Washer	Brass	1	Nickel
4.	Insulation	Delrin	1	None
3.	Insulation	Delrin	1	None
2.	Pin	Brass	1	Silver
1.	Body	Brass	1	Nickel
NO.	DESCRIPTION	MATERIAL	Q'TY	FINISH

UNITS	SCALE	SIZE	TOLERANCE	DRAWN BY:	CHECKED BY:	CAD FILE
[in] mm	NTS	A	.X +/- 0.2 .XX +/- 0.1 .XXX +/- 0.05 ANGLE +/- 0.5			17-07-DSN
SHEET 1 OF 1			PROPRIETARY AND CONFIDENTIAL THE INFORMATION IN THIS DRAWING IS THE SOLE PROPERTY OF TCC INDUSTRIES INC. ANY REPRODUCTION IN PARTS OR AS A WHOLE WITHOUT THE WRITTEN PERMISSION OF TCC INDUSTRIES INC IS PROHIBITED.			

DESCRIPTION
UHF, Jack/Female, Straight,Soldering, Bulkhead

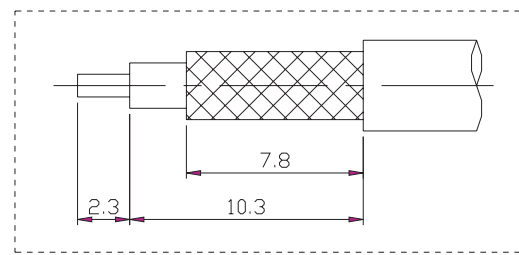
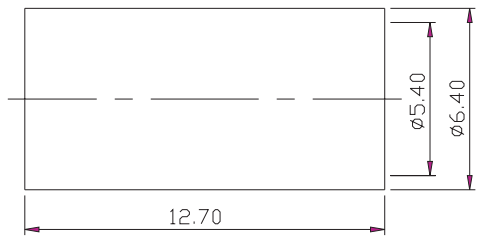
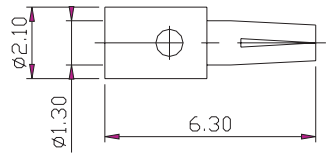
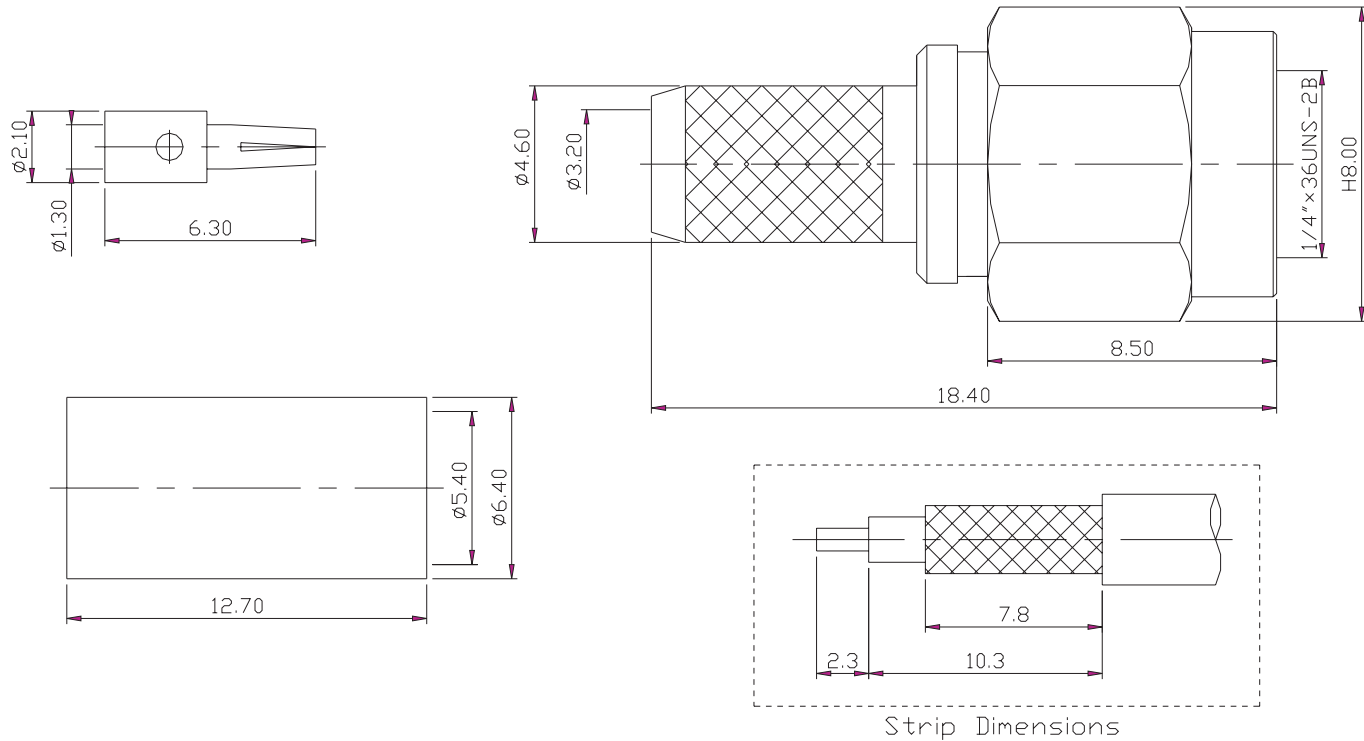


**TCC INDUSTRIES INC.**

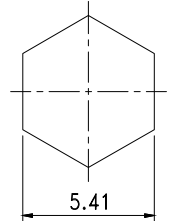
7050 Village Drive unit E, Buena Park, CA 90621-2282  
 Tel. 714.523.8885 - FAX. 714.562.0888  
 E-Mail: info@tcinc.com Website: www.tcinc.com

REVISION

REV	DATE	DESCRIPTION
△	9/03/20	INITIAL



Strip Dimensions



RECOMMENDED  
USE CRIMP TOOL DIE 0.213"

7	RING	BRASS	1	NICKEL
6	SI RUBBER	SILICONE	1	
5	C WASHER	SUS 304	1	
4	SHELL	BRASS	1	NICKEL
3	INSULATOR	TEFLON	1	
2	CONTACT	BRASS	1	GOLD
1	BODY	BRASS	1	NICKEL
NO	DESCRIPTION	MATERIAL	Q'TY	FINISH

UNITS	SCALE	SIZE	TOLERANCE	DRAWN BY:	CHECKED BY:	CAD FILE
[in] mm	NTS	A	.X +/- 0.2 .XX +/- 0.1 .XXX +/- 0.05 ANGLE +/- 0.5			19-03L1-RP-TGN
SHEET 1 OF 1			PROPRIETARY AND CONFIDENTIAL THE INFORMATION IN THIS DRAWING IS THE SOLE PROPERTY OF TCC INDUSTRIES INC. ANY REPRODUCTION IN PART OR AS A WHOLE WITHOUT THE WRITTEN PERMISSION OF TCC INDUSTRIES INC. IS PROHIBITED.			

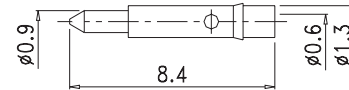
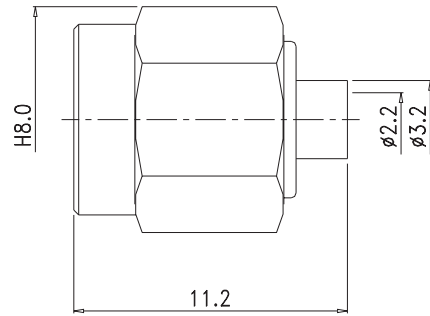
DESCRIPTION
SMA, Plug/Male, Straight,Crimp, Reverse Polarity, for TCC Cable Group L1



**TCC INDUSTRIES INC.**  
 7050 Village Drive unit E, Buena Park, CA 90621-2282  
 Tel. 714.523.8885 - FAX. 714.562.0888  
 E-Mail: info@tccinc.com Website: www.tccinc.com

REVISION

REV	DATE	DESCRIPTION
△	9/03/20	INITIAL



4.	SHELL	BRASS	1	NICKEL
3.	INSULATION	TEFLON	1	NONE
2.	PIN	BRASS	1	GOLD
1.	BODY	BRASS	1	NICKEL
NO.	DESCRIPTION	MATERIAL	Q'TY	FINISH

UNITS	SCALE	SIZE	TOLERANCE	DRAWN BY:	CHECKED BY:	CAD FILE
[in] mm	NTS	A	.X +/- 0.2 .XX +/- 0.1 .XXX +/- 0.05 ANGLE +/- 0.5			19-03S1-TGN
SHEET 1 OF 1			PROPRIETARY AND CONFIDENTIAL THE INFORMATION IN THIS DRAWING IS THE SOLE PROPERTY OF TCC INDUSTRIES INC. ANY REPRODUCTION IN PARTS OR AS A WHOLE WITHOUT THE WRITTEN PERMISSION OF TCC INDUSTRIES INC IS PROHIBITED.			

DESCRIPTION
SMA, Plug/Male, Straight, Solder, for TCC Cable Group S1



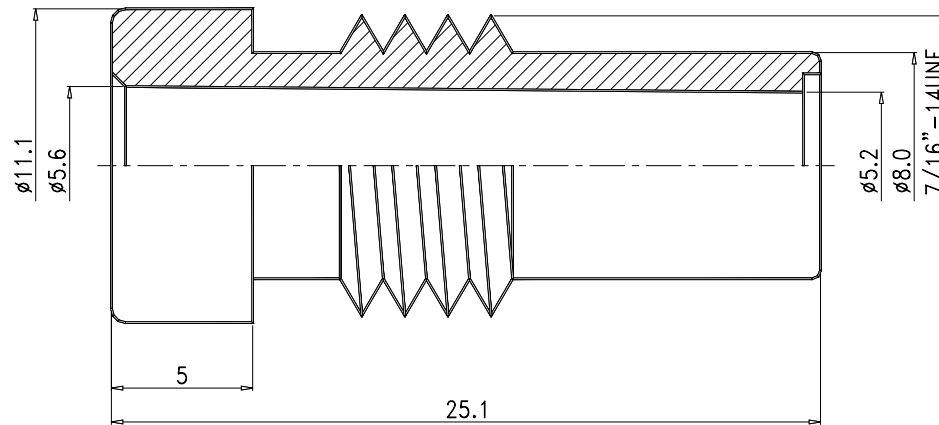
**TCC INDUSTRIES INC.**

7050 Village Drive unit E, Buena Park, CA 90621-2282  
 Tel. 714.523.8885 - FAX. 714.562.0888  
 E-Mail: info@tcinc.com Website: www.tcinc.com



REVISION

REV	DATE	DESCRIPTION
A	9/03/20	INITIAL



1.	BODY	ZINC	1	NICKEL
NO.	DESCRIPTION	MATERIAL	Q'TY	FINISH

UNITS	SCALE	SIZE	TOLERANCE	DRAWN BY:	CHECKED BY:	CAD FILE
[in] mm	NTS	A	.X +/- 0.2 .XX +/- 0.1 .XXX +/- 0.05 ANGLE +/- 0.5			17-09F-1-N
SHEET 1 OF 1						

PROPRIETARY AND CONFIDENTIAL  
 THE INFORMATION IN THIS DRAWING IS THE SOLE PROPERTY OF TCC INDUSTRIES INC. ANY REPRODUCTION IN PARTS OR AS A WHOLE WITHOUT THE WRITTEN PERMISSION OF TCC INDUSTRIES INC. IS PROHIBITED.

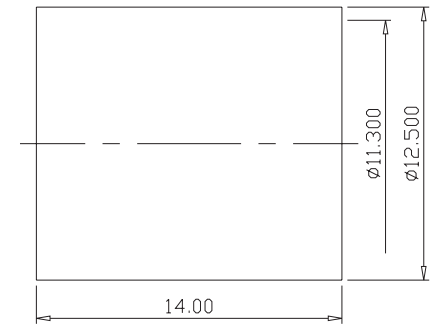
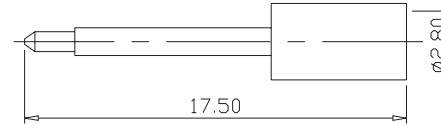
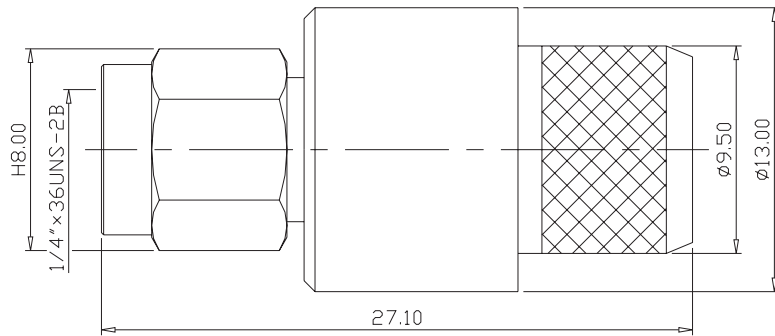
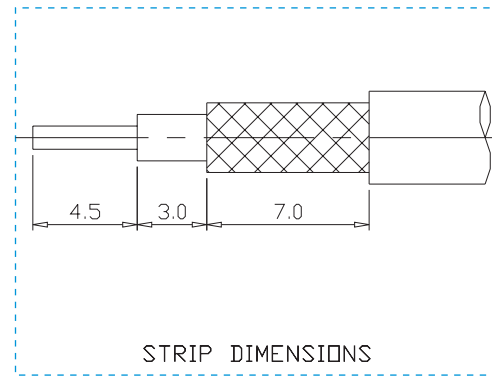
DESCRIPTION
UHF , , Soldering , , for TCC Cable Group F



**TCC INDUSTRIES INC.**  
 7050 Village Drive unit E, Buena Park, CA 90621-2282  
 Tel. 714.523.8885 - FAX. 714.562.0888  
 E-Mail: info@tcinc.com Website: www.tcinc.com

REVISION

REV	DATE	DESCRIPTION
△	9/03/20	INITIAL



7	RING	BRASS	1	NICKEL
6	SI RUBBER	SILICONE	1	
5	C WASHER	SUS 304	1	
4	CONTACT	BRASS	1	GOLD
3	INSULATOR	TEFLON	1	
2	SHELL	BRASS	1	NICKEL
1	BODY	BRASS	1	NICKEL
NO	DESCRIPTION	MATERIAL	Q'TY	FINISH

UNITS	SCALE	SIZE	TOLERANCE	DRAWN BY:	CHECKED BY:	CAD FILE
[in] mm	NTS	A	.X +/- 0.2 .XX +/- 0.1 .XXX +/- 0.05 ANGLE +/- 0.5			19-03T-TGN
SHEET 1 OF 1			PROPRIETARY AND CONFIDENTIAL THE INFORMATION IN THIS DRAWING IS THE SOLE PROPERTY OF TCC INDUSTRIES INC. ANY REPRODUCTION IN PARTS OR AS A WHOLE WITHOUT THE WRITTEN PERMISSION OF TCC INDUSTRIES INC. IS PROHIBITED.			

DESCRIPTION
SMA, Plug/Male, Straight,Crimp, for TCC Cable Group T



**TCC INDUSTRIES INC.**

7050 Village Drive unit E, Buena Park, CA 90621-2282

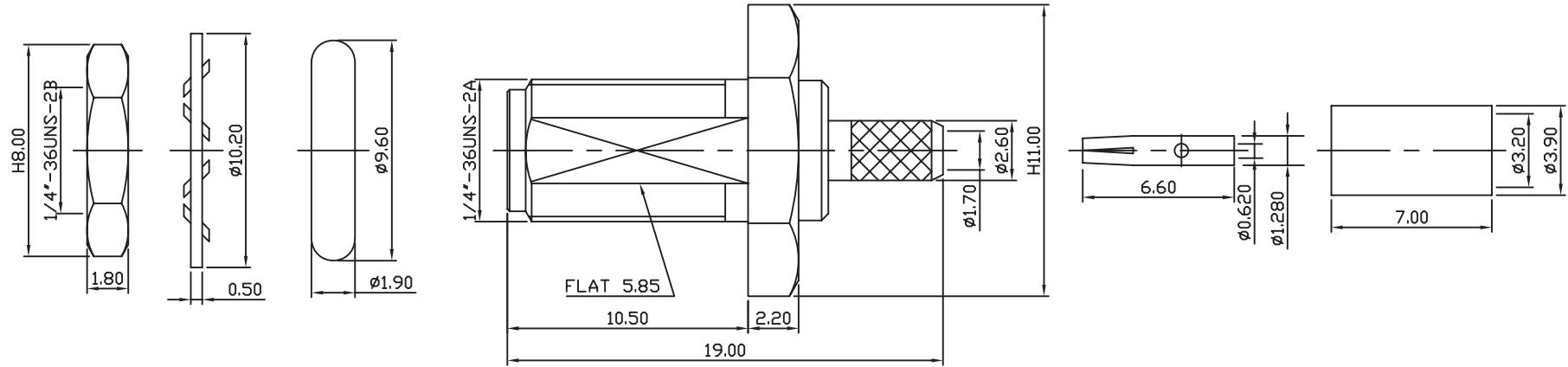
Tel. 714.523.8885 - FAX. 714.562.0888

E-Mail: info@tcinc.com Website: www.tcinc.com

**ELECTRICAL:**

IMPEDANCE: 50Ω  
 FREQUENCY RANGE: 0-12.4GHZ  
 VSWR: 1: 1.3  
 VOLTAGE RATING: 250 VOLTS RMS MAX.  
 DIELECTRIC WITHSTANDING VOLTAGE: 500 VOLTS RMS MAX  
 INSULATION RESISTANCE: 5000 MEG. Ω MIN.

REVISION		
REV	DATE	DESCRIPTION
△	9/03/20	INITIAL



7.	O-RING	RUBBER	1	NONE
6.	FERRULE	BRASS	1	NICKEL
5.	WASHER	BRASS	1	NICKEL
4.	NUT	BRASS	1	NICKEL
3.	INSULATION	TEFLON	1	NONE
2.	PIN	BERYLLIUM COPPER	1	GOLD
1.	BODY	BRASS	1	NICKEL
NO.	DESCRIPTION	MATERIAL	Q'TY	FINISH

UNITS	SCALE	SIZE	TOLERANCE	DRAWN BY:	CHECKED BY:	CAD FILE
[in] mm	NTS	A	.X +/- 0.2 .XX +/- 0.1 .XXX +/- 0.05 ANGLE +/- 0.5			19-04L-TGN
SHEET 1 OF 1				PROPRIETARY AND CONFIDENTIAL THE INFORMATION IN THIS DRAWING IS THE SOLE PROPERTY OF TCC INDUSTRIES INC. ANY REPRODUCTION IN PARTS OR AS A WHOLE WITHOUT THE WRITTEN PERMISSION OF TCC INDUSTRIES INC IS PROHIBITED.		

DESCRIPTION
SMA, Jack/Female, Straight,Crimp, Bulkhead, for TCC Cable Group L

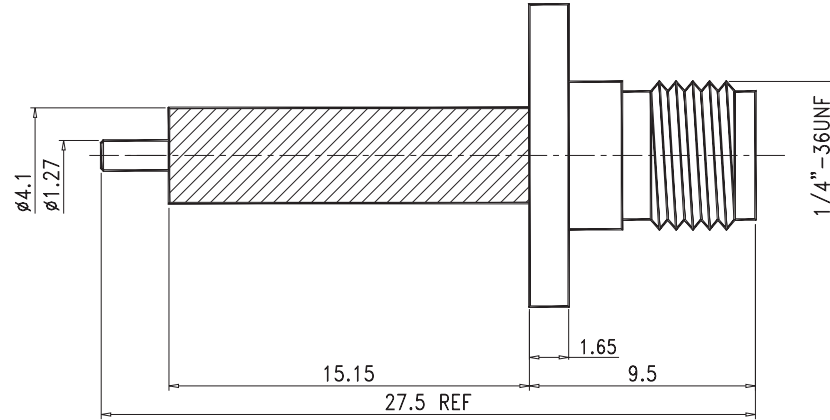
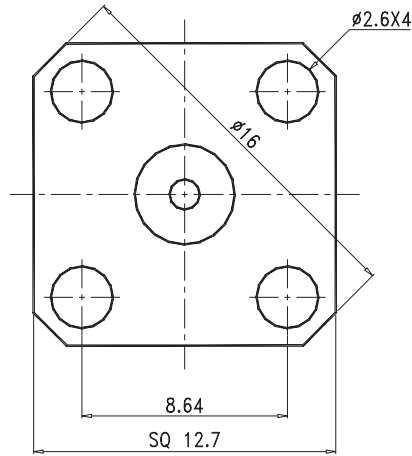


**TCC INDUSTRIES INC.**

7050 Village Drive unit E, Buena Park, CA 90621-2282  
 Tel. 714.523.8885 - FAX. 714.562.0888  
 E-Mail: info@tccinc.com Website: www.tccinc.com

REVISION

REV	DATE	DESCRIPTION
△	9/03/20	INITIAL



5.	WASHER	BRASS	1	NICKEL
4.	INSULATION2	TEFLON	1	NONE
3.	INSULATION1	TEFLON	1	NONE
2.	PIN	PhosBronze	1	GOLD
1.	BODY	BRASS	1	NICKEL
NO.	DESCRIPTION	MATERIAL	Q'TY	FINISH

UNITS	SCALE	SIZE	TOLERANCE	DRAWN BY:	CHECKED BY:	CAD FILE
[in] mm	NTS	A	.X +/- 0.2 .XX +/- 0.1 .XXX +/- 0.05 ANGLE +/- 0.5			19-13-EX-TGN
SHEET 1 OF 1			PROPRIETARY AND CONFIDENTIAL THE INFORMATION IN THIS DRAWING IS THE SOLE PROPERTY OF TCC INDUSTRIES INC. ANY REPRODUCTION IN PART OR AS A WHOLE WITHOUT THE WRITTEN PERMISSION OF TCC INDUSTRIES INC IS PROHIBITED.			

DESCRIPTION
SMA, Jack/Female, Straight,Soldering, 4 Hole Flange

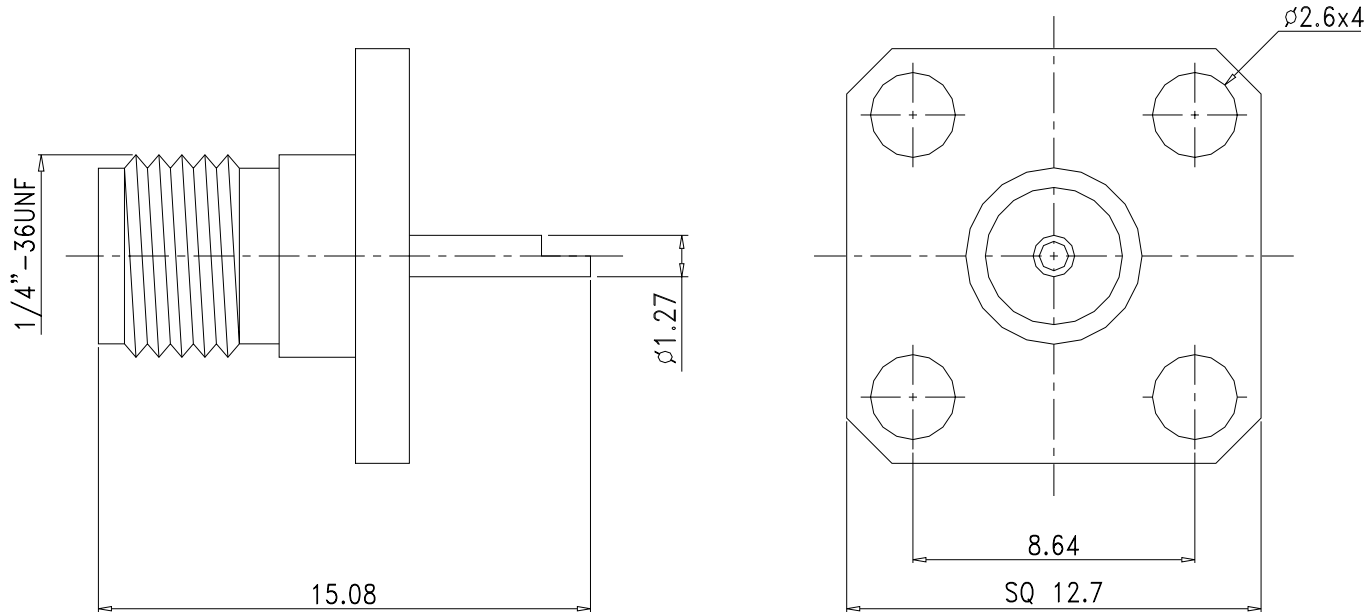


**TCC INDUSTRIES INC.**

7050 Village Drive unit E, Buena Park, CA 90621-2282  
 Tel. 714.523.8885 - FAX. 714.562.0888  
 E-Mail: info@tcinc.com Website: www.tcinc.com

REVISION

REV	DATE	DESCRIPTION
△	9/03/20	INITIAL



5.	WASHER	BRASS	1	NICKEL
4.	INSULATION2	TEFLON	1	NONE
3.	INSULATION1	TEFLON	1	NONE
2.	PIN	PhosBronze	1	GOLD
1.	BODY	BRASS	1	NICKEL
NO.	DESCRIPTION	MATERIAL	Q'TY	FINISH

UNITS	SCALE	SIZE	TOLERANCE	DRAWN BY:	CHECKED BY:	CAD FILE
[in] mm	NTS	A	.X +/- 0.2 .XX +/- 0.1 .XXX +/- 0.05 ANGLE +/- 0.5			19-13-TGN
SHEET 1 OF 1					PROPRIETARY AND CONFIDENTIAL THE INFORMATION IN THIS DRAWING IS THE SOLE PROPERTY OF TCC INDUSTRIES INC. ANY REPRODUCTION IN PARTS OR AS A WHOLE WITHOUT THE WRITTEN PERMISSION OF TCC INDUSTRIES INC IS PROHIBITED.	

DESCRIPTION
SMA, Jack/Female, Straight,Soldering, 4 Hole Flange

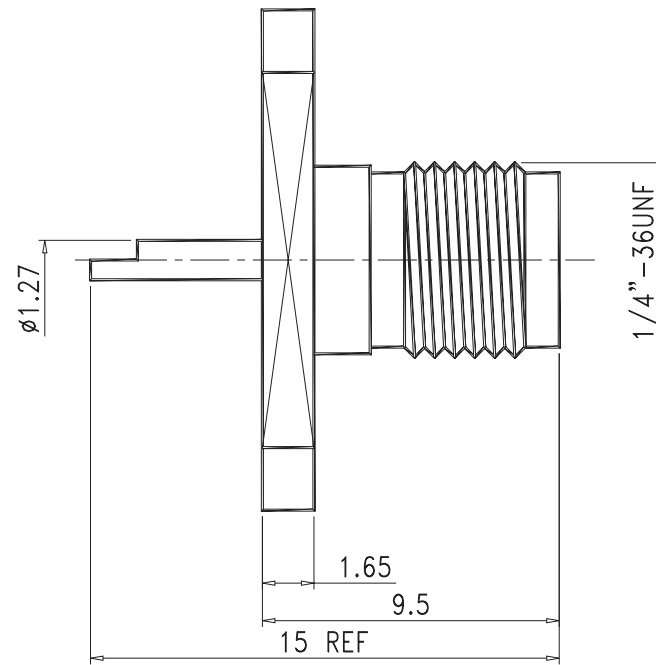
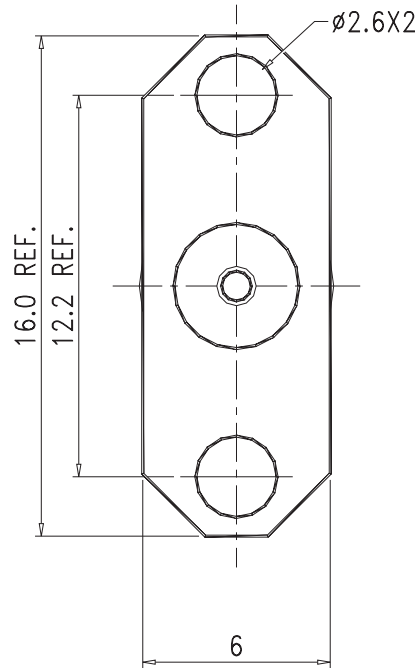


**TCC INDUSTRIES INC.**

7050 Village Drive unit E, Buena Park, CA 90621-2282  
 Tel. 714.523.8885 - FAX. 714.562.0888  
 E-Mail: info@tcinc.com Website: www.tcinc.com

REVISION

REV	DATE	DESCRIPTION
△	9/03/20	INITIAL



5.	WASHER	BRASS	1	NICKEL
4.	INSULATION2	TEFLON	1	NONE
3.	INSULATION1	TEFLON	1	NONE
2.	PIN	PhosBronze	1	GOLD
1.	BODY	BRASS	1	NICKEL
NO.	DESCRIPTION	MATERIAL	Q'TY	FINISH

UNITS	SCALE	SIZE	TOLERANCE	DRAWN BY:	CHECKED BY:	CAD FILE
[in] mm	NTS	A	.X +/- 0.2 .XX +/- 0.1 .XXX +/- 0.05 ANGLE +/- 0.5			19-17-TGN
SHEET 1 OF 1			PROPRIETARY AND CONFIDENTIAL THE INFORMATION IN THIS DRAWING IS THE SOLE PROPERTY OF TCC INDUSTRIES INC. ANY REPRODUCTION IN PARTS OR AS A WHOLE WITHOUT THE WRITTEN PERMISSION OF TCC INDUSTRIES INC. IS PROHIBITED.			

DESCRIPTION
SMA, Jack/Female, Straight,Soldering, 2 Hole Flange



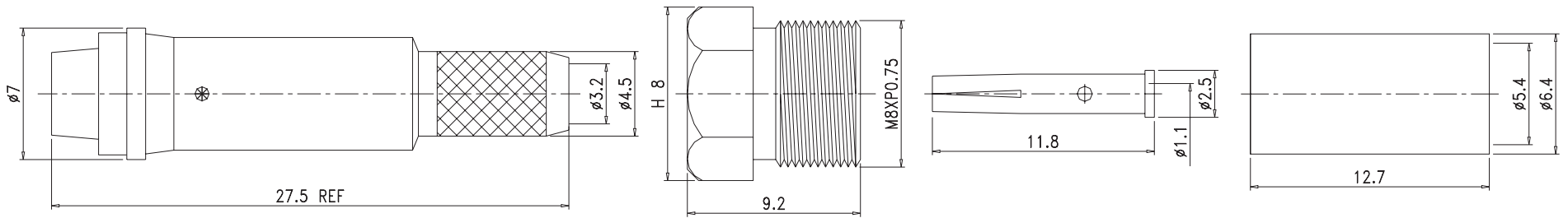
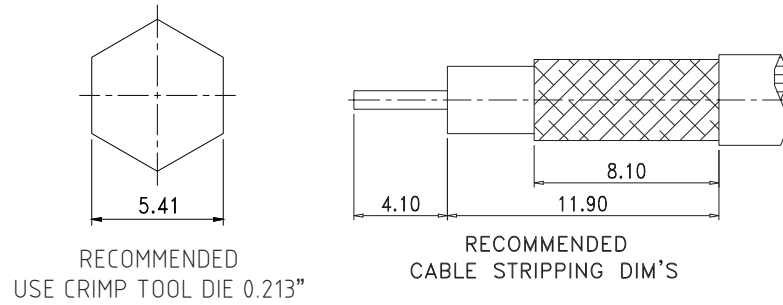
**TCC INDUSTRIES INC.**

7050 Village Drive unit E, Buena Park, CA 90621-2282  
 Tel. 714.523.8885 - FAX. 714.562.0888  
 E-Mail: info@tcinc.com Website: www.tcinc.com



REVISION

REV	DATE	DESCRIPTION
△	9/03/20	INITIAL



5.	Nut	Brass	1	Nickel
4.	Ferrule	Brass	1	Nickel
3.	Insulation	Delrin	1	None
2.	Pin	Brass	1	Gold
1.	Body	Brass	1	Nickel
NO.	DESCRIPTION	MATERIAL	Q'TY	FINISH

UNITS	SCALE	SIZE	TOLERANCE	DRAWN BY:	CHECKED BY:	CAD FILE
[in] mm	NTS	A	.X +/- 0.2 .XX +/- 0.1 .XXX +/- 0.05 ANGLE +/- 0.5			23-02FW-DGN
SHEET 1 OF 1				PROPRIETARY AND CONFIDENTIAL THE INFORMATION IN THIS DRAWING IS THE SOLE PROPERTY OF TCC INDUSTRIES INC. ANY REPRODUCTION IN PART OR AS A WHOLE WITHOUT THE WRITTEN PERMISSION OF TCC INDUSTRIES INC IS PROHIBITED.		

DESCRIPTION
FME, Jack/Female, Straight,Crimp, , for TCC Cable Group F

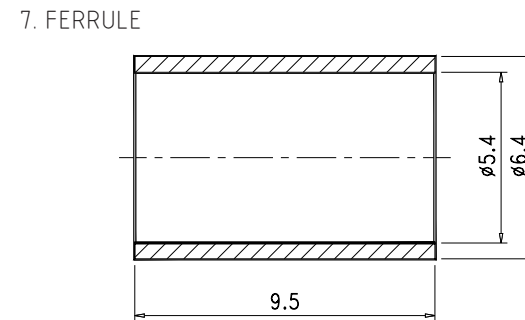
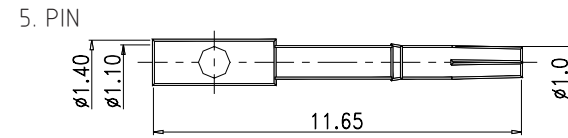
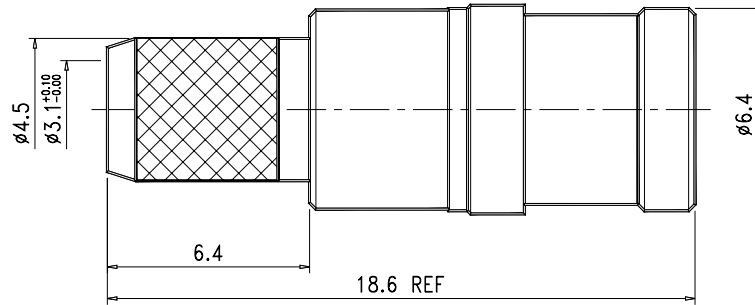


**TCC INDUSTRIES INC.**

7050 Village Drive unit E, Buena Park, CA 90621-2282  
 Tel. 714.523.8885 - FAX. 714.562.0888  
 E-Mail: info@tccinc.com Website: www.tccinc.com

REVISION

REV	DATE	DESCRIPTION
△	9/03/20	INITIAL



7.	FERRULE	BRASS	1	NICKEL
6.	INSULATION	TEFLON	1	NONE
5.	PIN	BERYLLIUM	1	GOLD
4.	SHELL	BRASS	1	NICKEL
3.	RetainingRING	BERYLLIUM	1	NICKEL
2.	BARREL	BRASS	1	NICKEL
1.	BODY	BRASS	1	NICKEL
NO.	DESCRIPTION	MATERIAL	Q'TY	FINISH

UNITS	SCALE	SIZE	TOLERANCE	DRAWN BY:	CHECKED BY:	CAD FILE
[in] mm	NTS	A	.X +/- 0.2 .XX +/- 0.1 .XXX +/- 0.05 ANGLE +/- 0.5			24-05F-TGN
SHEET 1 OF 1			PROPRIETARY AND CONFIDENTIAL THE INFORMATION IN THIS DRAWING IS THE SOLE PROPERTY OF TCC INDUSTRIES INC. ANY REPRODUCTION IN PART OR AS A WHOLE WITHOUT THE WRITTEN PERMISSION OF TCC INDUSTRIES INC. IS PROHIBITED.			

DESCRIPTION
SMB, Plug/Male, Straight,Crimp, for TCC Cable Group F



**TCC INDUSTRIES INC.**

7050 Village Drive unit E, Buena Park, CA 90621-2282

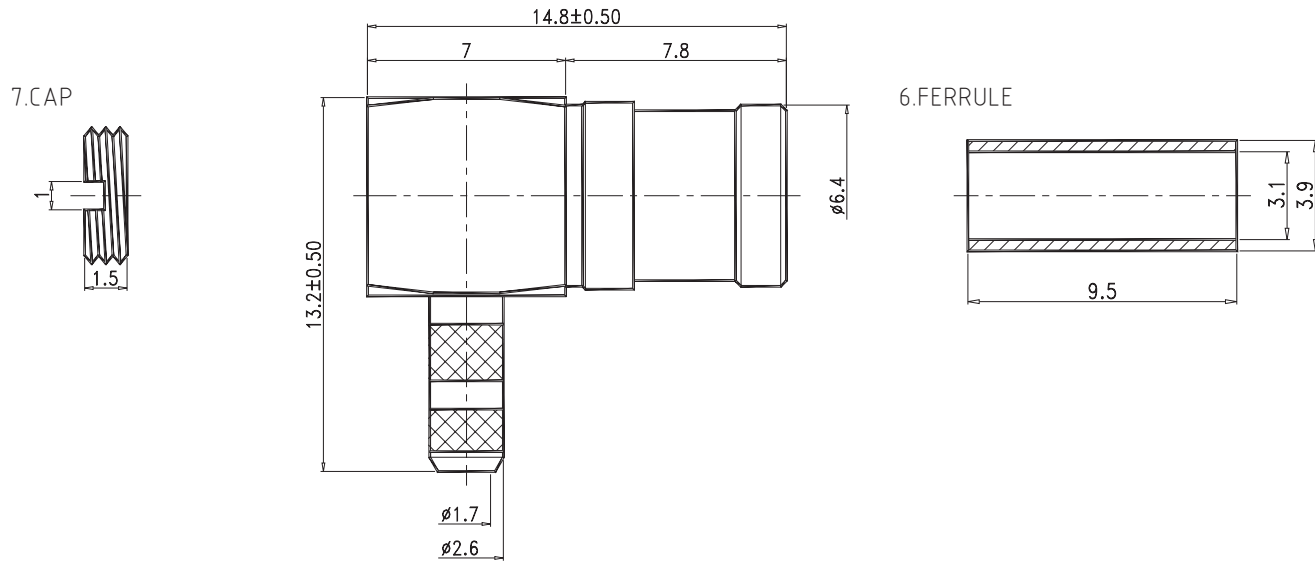
Tel. 714.523.8885 - FAX. 714.562.0888

E-Mail: info@tccinc.com Website: www.tccinc.com



REVISION

REV	DATE	DESCRIPTION
△	9/03/20	INITIAL



7	CAP	BRASS	1	GOLD
6	FERRULE	BRASS	1	GOLD
5	INSULATION	TEFLON	1	NONE
4	PIN	BERYLLIUM	1	GOLD
3	SPRING	BERYLLIUM	1	GOLD
2	BODY2	BRASS	1	GOLD
1	BODY1	BRASS	1	GOLD
NO.	DESCRIPTION	MATERIAL	Q'TY	FINISH

UNITS	SCALE	SIZE	TOLERANCE	DRAWN BY:	CHECKED BY:	CAD FILE
[in] mm	NTS	A	.X +/- 0.2 .XX +/- 0.1 .XXX +/- 0.05 ANGLE +/- 0.5			24-08L-TGG
SHEET 1 OF 1			PROPRIETARY AND CONFIDENTIAL THE INFORMATION IN THIS DRAWING IS THE SOLE PROPERTY OF TCC INDUSTRIES INC. ANY REPRODUCTION IN PARTS OR AS A WHOLE WITHOUT THE WRITTEN PERMISSION OF TCC INDUSTRIES INC. IS PROHIBITED.			

DESCRIPTION
SMB, Plug/Male, Right Angle,Crimp, for TCC Cable Group L



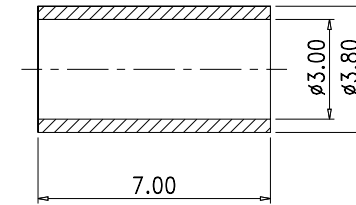
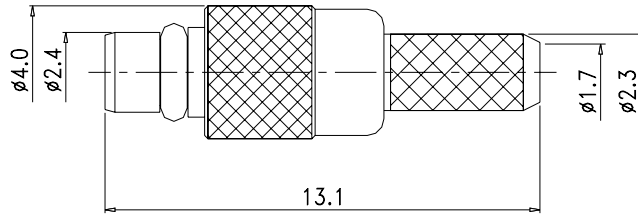
**TCC INDUSTRIES INC.**

7050 Village Drive unit E, Buena Park, CA 90621-2282  
 Tel. 714.523.8885 - FAX. 714.562.0888  
 E-Mail: info@tcinc.com Website: www.tcinc.com

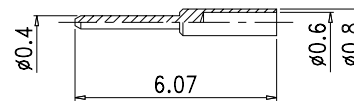
REVISION

REV	DATE	DESCRIPTION
△	9/03/20	INITIAL

6.FERRULE



3.PIN



6.	FERRULE	BRASS	1	GOLD
5.	RetainingRING	BERYLLIUM	1	GOLD
4.	INSULATION	TEFLON	1	NONE
3.	PIN	BRASS	1	GOLD
2.	BARREL	BRASS	1	GOLD
1.	BODY	BRASS	1	GOLD
NO.	DESCRIPTION	MATERIAL	Q'TY	FINISH

UNITS	SCALE	SIZE	TOLERANCE	DRAWN BY:	CHECKED BY:	CAD FILE
[in] mm	NTS	A	.X +/- 0.2 .XX +/- 0.1 .XXX +/- 0.05 ANGLE +/- 0.5			28-01L-TGG
SHEET 1 OF 1			PROPRIETARY AND CONFIDENTIAL THE INFORMATION IN THIS DRAWING IS THE SOLE PROPERTY OF TCC INDUSTRIES INC. ANY REPRODUCTION IN PARTS OR AS A WHOLE WITHOUT THE WRITTEN PERMISSION OF TCC INDUSTRIES INC IS PROHIBITED.			

DESCRIPTION
MMCX, Plug/Male, Straight,Crimp, for TCC Cable Group L

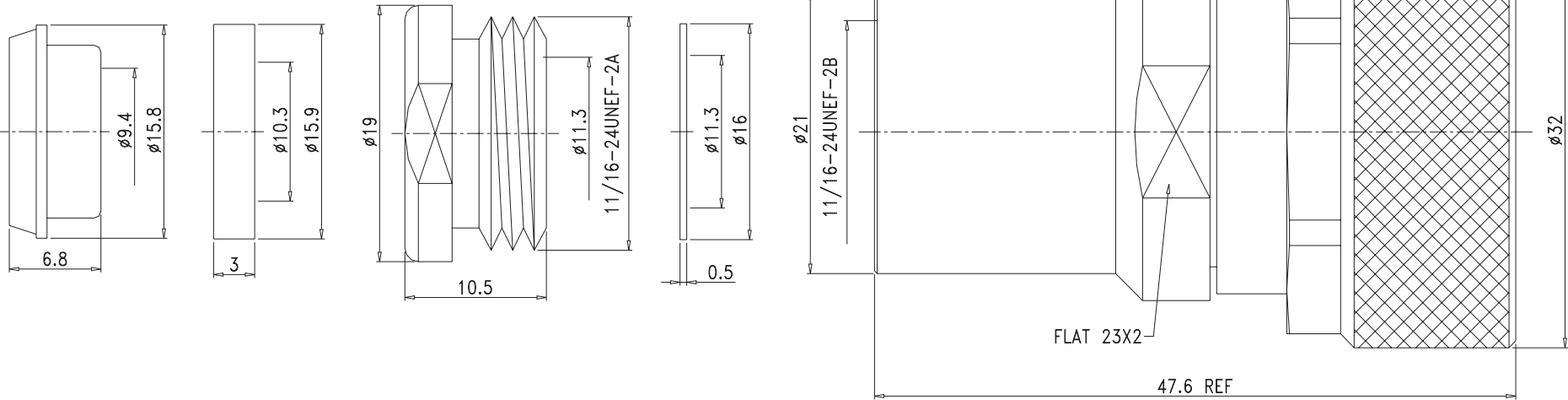


**TCC INDUSTRIES INC.**

7050 Village Drive unit E, Buena Park, CA 90621-2282  
 Tel. 714.523.8885 - FAX. 714.562.0888  
 E-Mail: info@tcinc.com Website: www.tcinc.com



REVISION		
REV	DATE	DESCRIPTION
△	9/03/20	INITIAL



12.	Nut	Brass	1	Silver
11.	Washer	Brass	1	Silver
10.	Gasket	Si-Rubber	1	Orange
9.	Braid Clamp	Brass	1	Silver
8.	Shell	Brass	1	Nickel
7.	Gasket	Si-Rubber	1	Orange
6.	Insulation	Teflon	1	None
5.	Insulation	Teflon	1	None
4.	Pin	Brass	1	Silver
3.	Pin	PhosphorBronze	1	Silver
2.	Body	Brass	1	Silver
1.	Body	Brass	1	Silver
NO.	DESCRIPTION	MATERIAL	Q'TY	FINISH

UNITS	SCALE	SIZE	TOLERANCE	DRAWN BY:	CHECKED BY:	CAD FILE
[in] mm	NTS	A	.X     +/- 0.2 .XX    +/- 0.1 .XXX   +/- 0.05 ANGLE +/- 0.5			30-01B-TSSN
SHEET 1 OF 1					PROPRIETARY AND CONFIDENTIAL THE INFORMATION IN THIS DRAWING IS THE SOLE PROPERTY OF TCC INDUSTRIES INC. ANY REPRODUCTION IN PART OR AS A WHOLE WITHOUT THE WRITTEN PERMISSION OF TCC INDUSTRIES INC IS PROHIBITED.	

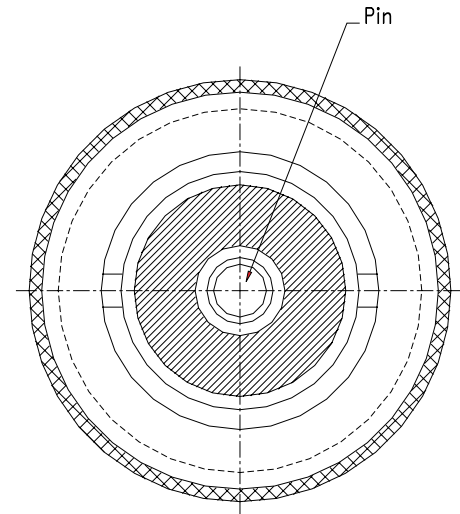
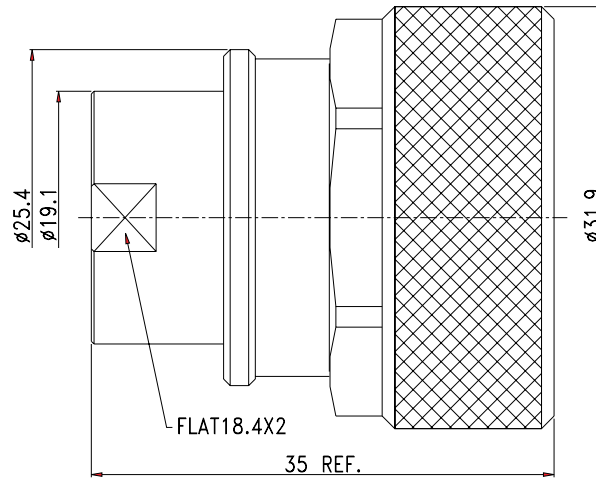
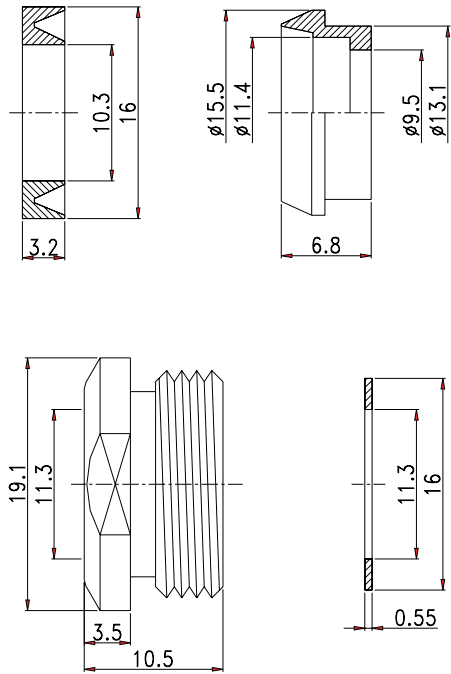
DESCRIPTION
7/16 DIN, Plug/Male, Straight, Clamp, for TCC Cable Group B



**TCC INDUSTRIES INC.**  
 7050 Village Drive unit E, Buena Park, CA 90621-2282  
 Tel. 714.523.8885 - FAX. 714.562.0888  
 E-Mail: info@tcinc.com Website: www.tcinc.com

REVISION

REV	DATE	DESCRIPTION
△	9/03/20	INITIAL



10.	Nut	Brass	1	Silver
9.	Washer 2	Brass	1	Silver
8.	Gasket 2	Rubber	1	None
7.	Washer 1	Brass	1	Nickel
6.	Gasket 1	Silicon Rubber	1	Orange
5.	Rotary Head	Brass	1	Nickel
4.	Insulator	Teflon	1	None
3.	Pin	Brass	1	Brass
2.	Body 2	Brass	1	Brass
1.	Body 1	Brass	1	Brass
NO.	DESCRIPTION	MATERIAL	Q'TY	FINISH

UNITS	SCALE	SIZE	TOLERANCE	DRAWN BY:	CHECKED BY:	CAD FILE
[in] mm	NTS	A	.X +/- 0.2 .XX +/- 0.1 .XXX +/- 0.05 ANGLE +/- 0.5			30-01T-TSSN
SHEET 1 OF 1				PROPRIETARY AND CONFIDENTIAL THE INFORMATION IN THIS DRAWING IS THE SOLE PROPERTY OF TCC INDUSTRIES INC. ANY REPRODUCTION IN PARTS OR AS A WHOLE WITHOUT THE WRITTEN PERMISSION OF TCC INDUSTRIES INC. IS PROHIBITED.		

DESCRIPTION
7/16 DIN, Plug/Male, Straight, Clamp, for TCC Cable Group T

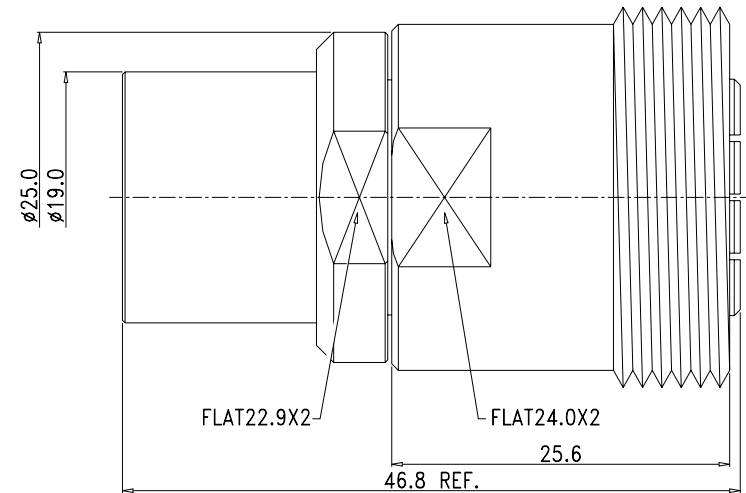
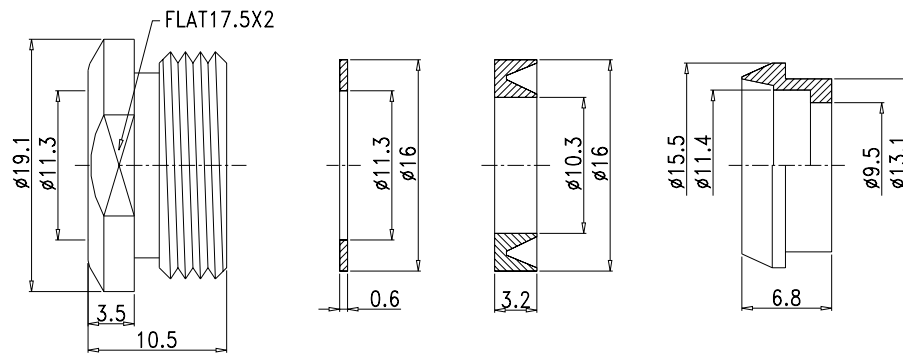


**TCC INDUSTRIES INC.**

7050 Village Drive unit E, Buena Park, CA 90621-2282  
 Tel. 714.523.8885 - FAX. 714.562.0888  
 E-Mail: info@tccinc.com Website: www.tccinc.com

REVISION

REV	DATE	DESCRIPTION
A	9/03/20	INITIAL



8.	Nut	Brass	1	Silver
7.	Washer 2	Brass	1	Silver
6.	Gasket	Rubber	1	None
5.	Washer 1	Brass	1	Nickel
4.	Insulator	Teflon	1	None
3.	Pin	Brass	1	Silver
2.	Body 2	Brass	1	Silver
1.	Body 1	Brass	1	Silver
NO.	DESCRIPTION	MATERIAL	Q'TY	FINISH

UNITS	SCALE	SIZE	TOLERANCE	DRAWN BY:	CHECKED BY:	CAD FILE
[in] mm	NTS	A	.X +/- 0.2 .XX +/- 0.1 .XXX +/- 0.05 ANGLE +/- 0.5			30-04T-TSSN
SHEET 1 OF 1				PROPRIETARY AND CONFIDENTIAL THE INFORMATION IN THIS DRAWING IS THE SOLE PROPERTY OF TCC INDUSTRIES INC. ANY REPRODUCTION IN PARTS OR AS A WHOLE WITHOUT THE WRITTEN PERMISSION OF TCC INDUSTRIES INC. IS PROHIBITED.		

DESCRIPTION
7/16 DIN, Jack/Female, Straight, Clamp, for TCC Cable Group T



**TCC INDUSTRIES INC.**

7050 Village Drive unit E, Buena Park, CA 90621-2282  
 Tel. 714.523.8885 - FAX. 714.562.0888  
 E-Mail: info@tccinc.com Website: www.tccinc.com